



**REGULAR MEETING  
OF THE  
CACHUMA OPERATION AND MAINTENANCE BOARD**

**Monday, February 23, 2026  
1:00 P.M.**

---

**HOW TO OBSERVE THE MEETING**

Join by Teleconference or Attend in Person

*COMB follows Centers for Disease Control and Prevention (CDC), California Department of Public Health (CDPH) and local public health guidelines with respect to COVID-19 protocols and masking requirements, based on local conditions and needs. COMB will have available masks for use during public meetings.*

Members of the public may observe the meeting electronically as set forth below.

**Join via Video Conference:**

<https://us02web.zoom.us/j/84025255954?pwd=zN6CFtniP3bxkSXDvH7uIKlkbFOZKb.1>

Passcode:521705

**Join via Teleconference:**

US +1 669 900 6833 Webinar ID: 840 2525 5954 Passcode: 521705

**HOW TO MAKE A PUBLIC COMMENT**

Any member of the public may address the Board on any subject within the jurisdiction of the Board of Directors. The total time for this item will be limited by the President of the Board. The Board is not responsible for the content or accuracy of statements made by members of the public. No action will be taken by the Board on any Public Comment item.

**In person:** Those observing the meeting in person may make comments during designated public comment periods.

**By Video:** Those observing the meeting by video may make comments during designated public comment periods using the “raise hand” feature. Commenters will be required to unmute their respective microphone when providing comments.

**By Telephone:** Those observing the meeting by telephone may make comments during the designated public comment periods by pressing \*9 on the keypad to indicate such interest. Commenters will be prompted to press \*6 to unmute their respective telephone when called upon to speak.

**AMERICANS WITH DISABILITIES ACT**

In compliance with the Americans with Disabilities Act, if you need special assistance to review agenda materials or participate in this meeting, please contact the Cachuma Operation and Maintenance Board office at (805) 687-4011 at least 48 hours prior to the meeting to enable the Board to make reasonable arrangements.

**THIS PAGE INTENTIONALLY LEFT BLANK**

**REGULAR MEETING  
OF THE CACHUMA OPERATION AND MAINTENANCE BOARD**  
*held at*  
**3301 Laurel Canyon Road  
Santa Barbara, CA 93105**

---

**Monday, February 23, 2026**

**1:00 PM**

**AGENDA**

**NOTICE:** This Meeting shall be conducted in-person and through remote access as authorized and in accordance with Government Code section 54953, AB 361 and AB 2449.

- 1. CALL TO ORDER, ROLL CALL**
- 2. PUBLIC COMMENT** *(Public may address the Board on any subject matter within the Board's jurisdiction. See "Notice to the Public" below.)*
- 3. CONSENT AGENDA** *(All items on the Consent Agenda are considered to be routine and will be approved or rejected in a single motion. Any item placed on the Consent Agenda may be removed and placed on the Regular Agenda for discussion and possible action upon the request of any Board Member.)*  
Action: Recommend Approval of Consent Agenda by motion and roll call vote of the Board
  - a. Minutes of January 26, 2026 Regular Board Meeting
  - b. Investment of Funds
    - Financial Reports
    - Investment Reports
  - c. Review of Paid Claims
- 4. DIRECTOR COMPENSATION - REQUIRED PUBLIC NOTIFICATIONS**  
Action: Receive information related to Director Compensation required public notifications, and provide direction to staff as appropriate
- 5. GENERAL MANAGER REPORT**  
Receive information from the General Manager on topics pertaining to COMB, including but not limited to the following:
  - Administration
  - U.S. Bureau of Reclamation
- 6. ENGINEER'S REPORT**  
Receive information from the COMB Engineer, including but not limited to the following:
  - Climate Conditions and Lake Elevation
  - Bradbury Dam Outlet Works Maintenance
  - Reclamation Water Management Workshop
  - Lauro Reservoir Camera Inspections
  - Winter Storm Damage and Repairs
  - Infrastructure Improvement Projects

**THIS PAGE INTENTIONALLY LEFT BLANK**

7. **OPERATIONS DIVISION REPORT**

Receive information regarding the Operations Division, including but not limited to the following:

- Lake Cachuma Operations
- Operation and Maintenance Activities

8. **FISHERIES DIVISION REPORT**

Receive information from the Fisheries Division Manager, including, but not limited to the following:

- LSYS Steelhead Monitoring Elements
- Surcharge Water Accounting
- Reporting/Outreach/Training

9. **PROGRESS REPORT ON LAKE CACHUMA OAK TREE PROGRAM**

Action: Receive information, including but not limited to the following:

- Maintenance and Monitoring

10. **MONTHLY CACHUMA PROJECT REPORTS**

Receive information regarding the Cachuma Project, including but not limited to the following:

- a. Cachuma Water Reports
- b. Cachuma Reservoir Current Conditions
- c. Lake Cachuma Quagga Survey

11. **DIRECTORS' REQUESTS FOR AGENDA ITEMS FOR FUTURE MEETING**

12. **MEETING SCHEDULE**

- **Regular Board Meeting – March 23, 2026 at 1:00 PM**
- **Board Packages available on COMB website [www.cachuma-board.org](http://www.cachuma-board.org)**

13. **COMB ADJOURNMENT**

**NOTICE TO PUBLIC**

**Posting of Agenda:** This agenda was posted at COMB's offices, located at 3301 Laurel Canyon Road, Santa Barbara, California, 93105 and on COMB's website, in accordance with Government Code Section 54954.2. The agenda contains a brief general description of each item to be considered by the Governing Board. The Board reserves the right to modify the order in which agenda items are heard. Copies of staff reports or other written documents relating to each item of business are on file at the COMB offices and are available for public inspection during normal business hours. A person with a question concerning any of the agenda items may call COMB's General Manager at (805) 687-4011.

**Written materials:** In accordance with Government Code Section 54957.5, written materials relating to an item on this agenda which are distributed to the Governing Board less than 72 hours (for a regular meeting) or 24 hours (for a special meeting) will be made available for public inspection at the COMB offices during normal business hours. The written materials may also be posted on COMB's website subject to staff's ability to post the documents before the scheduled meeting.

**Public Comment:** Any member of the public may address the Board on any subject within the jurisdiction of the Board. The total time for this item will be limited by the President of the Board. The Board is not responsible for the content or accuracy of statements made by members of the public. No action will be taken by the Board on any Public Comment item.

**Americans with Disabilities Act:** In compliance with the Americans with Disabilities Act, if you need special assistance to review agenda materials or participate in this meeting, please contact the Cachuma Operation and Maintenance Board office at (805) 687-4011 at least 48 hours prior to the meeting to enable the Board to make reasonable arrangements.

**Note:** If you challenge in court any of the Board's decisions related to the listed agenda items you may be limited to raising only those issues you or someone else raised at any public hearing described in this notice or in written correspondence to the Governing Board prior to the public hearing.

**THIS PAGE INTENTIONALLY LEFT BLANK**

**MINUTES OF REGULAR MEETING  
OF THE CACHUMA OPERATION AND MAINTENANCE BOARD**

*held at*

**3301 Laurel Canyon Road  
Santa Barbara, CA 93105**

**Monday, January 26, 2026  
1:00 PM**

---

**MINUTES**

**1. CALL TO ORDER, ROLL CALL**

The regular meeting of the Board of Directors was called to order by President Sneddon at 1:01 PM.

**Directors Present:**

Patrick O'Connor, Carpinteria Valley Water District  
Kristen Sneddon, City of Santa Barbara  
Lauren Hanson, Goleta Water District  
Cori Hayman, Montecito Water District

**General Counsel Present:**

William Carter - Musick, Peeler, Garrett, LLP

**Staff Present:**

Janet Gingras, General Manager	Joel Degner, Engineer/Operations Division Manager
Edward Lyons, Administrative Manager / CFO	Shane King, Ops Supervisor/Chief Distribution Operator
Tim Robinson, Fisheries Division Manager	Rosey Bishop, Administrative Assistant II
Elijah Papan, Water Resources Analyst II	Dorothy Turner, Administrative Assistant II

**Others Present:**

Dakota Corey, City of Santa Barbara	Nicholas Turner, Montecito Water District
Kelley Dyer, Carpinteria Vly Water District	Matt Young, County of Santa Barbara
Dana Hoffenberg, City of Santa Barbara	Michael, Member of the Public
Matthew Scudato, County of Santa Barbara	

**2. PUBLIC COMMENT**

There was no public comment.

**3. CONSENT AGENDA**

- a. Minutes of November 17, 2025 Regular Board Meeting
- b. Minutes of December 15, 2025 Regular Board Meeting
- c. Investment of Funds
  - Financial Reports
  - Investment Reports
- d. Review of Paid Claims

Ms. Gingras introduced the Consent Agenda. She noted that its approval would need to be addressed in three separate votes. Mr. Lyons referred the Board to the Review of Paid Claims and provided detail for several remittances of note, including three remittances to the State Water Resources Control Board and checks issued to each Member Agency to return unexpended funds for 2024-25. He also noted payments to Cushman Contracting and Southwest Valve & Equipment.

Director Hanson provided three motions to approve the Consent Agenda, followed by three seconds from President Sneddon. All three motions carried with the following roll call votes:

**Vote #1 Item 3a:** Five in favor with one abstention.

**Ayes:** Hayman, Hanson, Sneddon

**Nays:**

**Absent:**

**Abstain:** O'Connor

**Vote #2 Item 3b:** Five in favor with one abstention.

**Ayes:** Hanson, O'Connor, Sneddon

**Nays:**

**Absent:**

**Abstain:** Hayman

**Vote #3 Items #3c & 3d:** Six in favor.

**Ayes:** Hayman, Hanson, O'Connor, Sneddon

**Nays:**

**Absent:**

**Abstain:**

#### 4. **FINANCIAL REVIEW – 2<sup>ND</sup> QUARTER FISCAL YEAR 2025-26**

Mr. Lyons shared a slide presentation for his financial review of the second quarter of Fiscal Year 2025-26. He summarized the first six months of the fiscal year and then reviewed revenues collected. Moving on to the division reports, and taking each division separately, Mr. Lyons compared actual expenses to the divisions' budgets, with explanation for any variances that exceeded the Year-to-Date apportioned budget. He provided a forecast of projected expenditures versus budget for the remainder of the fiscal year. Finally, Mr. Lyons reviewed the administrative deliverables, noting that staff has begun the budget season work

#### 5. **WINTER 2025-26 LAKE CACHUMA HYDROLOGY and WATER ACCOUNTING OVERVIEW**

Sharing his slideshow, Mr. Papen presented a comprehensive overview of 2025-26 Hydrology and Cachuma water accounting. He discussed the impact of the early winter storms on the watershed and reservoir. As well, Mr. Papen reviewed each of the water reports and provided in-depth explanation for how the data is accumulated and how to read each report.

#### 6. **GENERAL MANAGER REPORT**

- Administration

Ms. Gingras presented the General Manager report. She reviewed the contracts that she had executed during the prior quarter. With respect to the annual IT consultation meeting, she advised that staff will update or review certain plans and systems and continue security monitoring efforts. Finally, Ms. Gingras reported that the 5-Year Infrastructure Improvement Plan is undergoing an update and all divisions are involved in budget planning and development of annual work plans.

**8. ENGINEER'S REPORT**

- Climate Conditions and Lake Elevation
- Bradbury Dam Outlet Works Maintenance
- Winter Storm Damage
- Infrastructure Improvement Projects

Mr. Degner provided an update on climate and reservoir conditions and noted that this year marks the second earliest spill from the reservoir. The wet year triggers both surplus water availability and required table 2 releases. He added that the spill allowed Reclamation to dewater the Bradbury Dam outlet works and replace the non-operational valves more easily. Mr. Degner reviewed the status of Operations projects, both anticipated and in progress and finally reported that staff will participate in Reclamation's Water Management Workshop in Denver during February.

**9. OPERATIONS DIVISION REPORT**

- Lake Cachuma Operations
- Operation and Maintenance Activities

Mr. King presented the Operations report. Staff worked on a number of projects, including repair of a culvert, storm checks, gravel augmentation assistance to Fisheries and assistance to Reclamation during installation of the new valves at the dam. He reported that the annual load bank testing of the generators had been accomplished and staff was otherwise focused on normal winter maintenance of the facilities.

**10. FISHERIES DIVISION REPORT**

- LSYR Steelhead Monitoring Elements
- Surcharge Water Accounting
- Reporting/Outreach/Training

Mr. Robinson initiated his report by noting that target flows were all met due to recent storm systems and releases from Bradbury Dam. Staff continues stranding surveys during the water releases, although Reclamation is beginning the ramp-down of the releases. He provided an update of trapping activities and the tributary projects. Finally, he fielded questions from the Board.

**11. PROGRESS REPORT ON LAKE CACHUMA OAK TREE PROGRAM**

Action: Receive information, including but not limited to the following:

- Maintenance and Monitoring

Mr. Robinson stated that the annual inventory was due to begin soon and that the full reservoir had once again inundated some of the trees.

**12. MONTHLY CACHUMA PROJECT REPORTS**

- a. Cachuma Water Reports
- b. Cachuma Reservoir Current Conditions
- c. Lake Cachuma Quagga Survey

Ms. Gingras presented the Cachuma Project reports. Other than a brief reference to Mr. Papen's earlier presentation, she noted that the reports were routine.

**14. DIRECTORS' REQUESTS FOR AGENDA ITEMS FOR FUTURE MEETING**

Director O'Connor suggested that the Board might discuss whether certain of COMB's activities might constitute a beneficial public outreach presentation in the future.

**15. MEETING SCHEDULE**

- **Regular Board Meeting – February 23, 2026 at 1:00 PM**
- **Board Packages available on COMB website [www.cachuma-board.org](http://www.cachuma-board.org)**

**16. COMB ADJOURNMENT**

There being no further business, the meeting was adjourned at 2:42 PM.

Respectfully submitted,

\_\_\_\_\_  
Janet Gingras, Secretary of the Board

	<i>Approved</i>
√	<i>Unapproved</i>

**APPROVED:**

\_\_\_\_\_  
Kristen W. Sneddon, President of the Board

# Cachuma Operation & Maintenance Board Statement of Net Position

As of January 31, 2026  
UNAUDITED FINANCIALS

January 31, 2026

## ASSETS

### Current Assets

#### Checking/Savings

##### Trust Funds

1210 · Warren Act Trust Fund \$ 47,584.54

1220 · Renewal Fund 98,266.13

**Total Trust Funds** \$ 145,850.67

1050 · General Fund 793,201.28

1100 · Revolving Fund 223,822.49

**Total Checking/Savings** 1,162,874.44

#### Accounts Receivable

1301 · Accounts Receivable 1,570.00

1320 · Quarterly Assessments Receivable 599,740.00

**Total Accounts Receivable** 601,310.00

#### Other Current Assets

1200 · LAIF 1,384,967.67

1010 · Petty Cash 500.00

1303 · Bradbury SOD Act Assessments Receivable 243,910.99

1304 · Lauro Dam SOD Assessments Receivable 36,857.68

1400 · Prepaid Insurance 16,794.72

**Total Other Current Assets** 1,683,031.06

**Total Current Assets** 3,447,215.50

### Fixed Assets

1500 · Vehicles 979,000.81

1505 · Office Furniture & Equipment 228,057.03

1510 · Mobile Offices 424,910.38

1515 · Field Equipment 872,485.33

1520 · Building Improvements 62,263.00

1524 · Infrastructure 9,209,556.69

1550 · Accumulated Depreciation (2,507,786.69)

**Total Fixed Assets** 9,268,486.55

### Other Assets

1910 · Long Term Bradbury SOD Assessments Receivable 3,128,787.07

1920 · Long Term Lauro SOD Assessments Receivable 598,136.76

1922 · Deferred Outflow of Resources (GASB 68) 900,790.00

1923 · Deferred Outflow (GASB 75) 435,105.00

**Total Other Assets** 5,062,818.83

**TOTAL ASSETS** \$ **17,778,520.88**

**Cachuma Operation & Maintenance Board  
Statement of Net Position**

As of January 31, 2026  
UNAUDITED FINANCIALS

January 31, 2026

**LIABILITIES & NET POSITION**

**Liabilities**

**Current Liabilities**

**Accounts Payable**

2200 · Accounts Payable	\$ 16,067.20
-------------------------	--------------

Total Accounts Payable	16,067.20
------------------------	-----------

**Other Current Liabilities**

2505 · Accrued Wages	62,660.66
----------------------	-----------

2550 · Compensated Absences	133,542.44
-----------------------------	------------

2561 · Bradbury Dam SOD Act	243,910.99
-----------------------------	------------

2563 · Lauro Dam SOD Act	36,857.68
--------------------------	-----------

2565 · Accrued Interest SOD Act	21,213.00
---------------------------------	-----------

2590 · Deferred Revenue	145,850.67
-------------------------	------------

2596 · OPEB Liability	128,000.00
-----------------------	------------

Total Other Current Liabilities	772,035.44
---------------------------------	------------

Total Current Liabilities	788,102.64
---------------------------	------------

**Long Term Liabilities**

2615 · Long Term Compensated Absences	216,451.00
---------------------------------------	------------

2602 · Long Term SOD Act Liability-Bradbury	3,128,777.07
---	--------------

2603 · Long Term SOD Act Liability - Lauro	598,136.76
--	------------

2604 · OPEB Long Term Liability	2,704,638.00
---------------------------------	--------------

2610 · Net Pension Liability (GASB 68)	2,709,761.00
--	--------------

2611 · Deferred Inflow of Resources (GASB 68)	26,677.00
---	-----------

2612 · Deferred Inflow of Resources (GASB 75)	1,325,905.00
---	--------------

Total Long Term Liabilities	10,710,345.83
-----------------------------	---------------

Total Liabilities	11,498,448.47
-------------------	---------------

**Net Position**

3000 · Opening Balance Net Position	(5,056,708.89)
-------------------------------------	----------------

3901 · Retained Net Assets	9,268,487.00
----------------------------	--------------

Net Surplus / Deficit	2,068,294.30
-----------------------	--------------

Total Net Position	6,280,072.41
--------------------	--------------

TOTAL LIABILITIES & NET POSITION	\$ 17,778,520.88
----------------------------------	------------------

**Cachuma Operation & Maintenance Board**  
**Statement of Revenues and Expenditures (Unaudited)**  
 Budget vs. Actuals July 2025 - June 2026

	Fisheries				Operations				TOTAL			
	Jul '25 - Jan 26	Budget	\$ Over / (Under) Budget	% of Budget	Jul '25 - Jan 26	Budget	\$ Over / (Under) Budget	% of Budget	Jul '25 - Jan 26	Budget	\$ Over / (Under) Budget	% of Budget
<b>Revenue</b>												
<b>3000 REVENUE</b>												
3001 · O&M Budget (Qtrly Assessments)	\$ 943,324.00	\$ 1,372,330.00	\$ (429,006.00)	68.74%	\$ 3,665,474.00	\$ 5,054,601.00	\$ (1,389,127.00)	72.52%	\$ 4,608,798.00	\$ 6,426,931.00	\$ (1,818,133.00)	71.71%
3006 · Warren Act	15,007.00	15,007.00	0.00	100.0%	0.00				15,007.00	15,007.00	0.00	100.0%
3007 · Renewal Fund	146,972.87	244,239.00	-97,266.13	60.18%	0.00				146,972.87	244,239.00	-97,266.13	60.18%
3010 · Interest Income	0.00				35,873.39	0.00	35,873.39	100.0%	35,873.39	0.00	35,873.39	100.0%
3014 · Non-Member Agency Revenue	4,819.00	0.00	4,819.00	100.0%	0.00	0.00	0.00	0.0%	4,819.00	0.00	4,819.00	100.0%
3020 · Misc Income	0.00	0.00	0.00	0.0%	19,334.26	20,000.00	-665.74	96.67%	19,334.26	20,000.00	-665.74	96.67%
3021 · Grant Income	0.00	0.00	0.00	0.0%	476.00	154,000.00	-153,524.00	0.31%	476.00	154,000.00	-153,524.00	0.31%
3035 · Cachuma Project Betterment Fund	100,000.00	100,000.00	0.00	100.0%	0.00				100,000.00	100,000.00	0.00	100.0%
3047 · FEMA - 2023 Winter Storms	0.00	0.00	0.00	0.0%	0.00	800,000.00	-800,000.00	0.0%	0.00	800,000.00	-800,000.00	0.0%
3049 · FEMA - 2024 Winter Storms	0.00	0.00	0.00	0.0%	213,543.78	495,000.00	-281,456.22	43.14%	213,543.78	495,000.00	-281,456.22	43.14%
3090 · Proceeds - Disp of Fixed Asset	0.00				11,300.00	0.00	11,300.00	100.0%	11,300.00	0.00	11,300.00	100.0%
<b>Total 3000 REVENUE</b>	<b>\$ 1,210,122.87</b>	<b>\$ 1,731,576.00</b>	<b>\$ (521,453.13)</b>	<b>69.9%</b>	<b>\$ 3,946,001.43</b>	<b>\$ 6,523,601.00</b>	<b>\$ (2,577,599.57)</b>	<b>60.56%</b>	<b>\$ 5,156,124.30</b>	<b>\$ 8,255,177.00</b>	<b>\$ (3,099,052.70)</b>	<b>62.46%</b>
<b>Expense</b>												
3100 · LABOR - OPERATIONS	\$ -	\$ -	\$ -	0.0%	\$ 808,278.97	\$ 1,382,999.00	\$ (574,720.03)	58.44%	\$ 808,278.97	\$ 1,382,999.00	\$ (574,720.03)	58.44%
<b>3200 VEH &amp; EQUIPMENT</b>												
3201 · Vehicle/Equip Mtce	0.00				24,676.51	50,000.00	-25,323.49	49.35%	24,676.51	50,000.00	-25,323.49	49.35%
3202 · Fixed Capital	0.00				183,002.14	206,000.00	-22,997.86	88.84%	183,002.14	206,000.00	-22,997.86	88.84%
3203 · Equipment Rental	0.00				22,852.67	40,000.00	-17,147.33	57.13%	22,852.67	40,000.00	-17,147.33	57.13%
3204 · Miscellaneous	0.00				1,638.90	10,000.00	-8,361.10	16.39%	1,638.90	10,000.00	-8,361.10	16.39%
<b>Total 3200 VEH &amp; EQUIPMENT</b>	<b>0.00</b>				<b>232,170.22</b>	<b>306,000.00</b>	<b>-73,829.78</b>	<b>75.87%</b>	<b>232,170.22</b>	<b>306,000.00</b>	<b>-73,829.78</b>	<b>75.87%</b>
<b>3300 - CONTRACT LABOR</b>												
3301 · Conduit, Meter, Valve & Misc	0.00				24,726.74	35,000.00	-10,273.26	70.65%	24,726.74	35,000.00	-10,273.26	70.65%
3302 · Buildings & Roads	0.00				5,933.70	50,000.00	-44,066.30	11.87%	5,933.70	50,000.00	-44,066.30	11.87%
3303 · Reservoirs	0.00				25,980.00	70,000.00	-44,020.00	37.11%	25,980.00	70,000.00	-44,020.00	37.11%
3304 · Engineering, Misc Services	0.00				0.00	50,000.00	-50,000.00	0.0%	0.00	50,000.00	-50,000.00	0.0%
<b>Total 3300 - CONTRACT LABOR</b>	<b>0.00</b>				<b>56,640.44</b>	<b>205,000.00</b>	<b>-148,359.56</b>	<b>27.63%</b>	<b>56,640.44</b>	<b>205,000.00</b>	<b>-148,359.56</b>	<b>27.63%</b>
<b>3400 - MATERIALS &amp; SUPPLIES</b>												
3401 · Conduit, Meter, Valve & Misc	0.00				47,186.28	82,500.00	-35,313.72	57.2%	47,186.28	82,500.00	-35,313.72	57.2%
3402 · Buildings & Roads	0.00				2,546.86	20,500.00	-17,953.14	12.42%	2,546.86	20,500.00	-17,953.14	12.42%
3403 · Reservoirs	0.00				13,199.11	10,500.00	2,699.11	125.71%	13,199.11	10,500.00	2,699.11	125.71%
<b>Total 3400 - MATERIALS &amp; SUPPLIES</b>	<b>0.00</b>				<b>62,932.25</b>	<b>113,500.00</b>	<b>-50,567.75</b>	<b>55.45%</b>	<b>62,932.25</b>	<b>113,500.00</b>	<b>-50,567.75</b>	<b>55.45%</b>
<b>3500 - OTHER EXPENSES</b>												
3501 · Utilities	0.00				1,137.19	7,000.00	-5,862.81	16.25%	1,137.19	7,000.00	-5,862.81	16.25%
3502 · Uniforms	0.00				1,193.31	7,500.00	-6,306.69	15.91%	1,193.31	7,500.00	-6,306.69	15.91%
3503 · Communications	0.00				7,767.87	16,000.00	-8,232.13	48.55%	7,767.87	16,000.00	-8,232.13	48.55%
3504 · USA & Other Services	0.00				2,903.77	8,000.00	-5,096.23	36.3%	2,903.77	8,000.00	-5,096.23	36.3%
3505 · Miscellaneous	0.00				7,229.14	12,000.00	-4,770.86	60.24%	7,229.14	12,000.00	-4,770.86	60.24%

**Cachuma Operation & Maintenance Board**  
**Statement of Revenues and Expenditures (Unaudited)**  
 Budget vs. Actuals July 2025 - June 2026

	Fisheries				Operations				TOTAL			
	Jul '25 - Jan 26	Budget	\$ Over / (Under) Budget	% of Budget	Jul '25 - Jan 26	Budget	\$ Over / (Under) Budget	% of Budget	Jul '25 - Jan 26	Budget	\$ Over / (Under) Budget	% of Budget
3506 · Training	0.00				2,352.75	3,000.00	-647.25	78.43%	2,352.75	3,000.00	-647.25	78.43%
3507 · Permits	0.00				21,736.02	25,000.00	-3,263.98	86.94%	21,736.02	25,000.00	-3,263.98	86.94%
<b>Total 3500 · OTHER EXPENSES</b>	<b>0.00</b>				<b>44,320.05</b>	<b>78,500.00</b>	<b>-34,179.95</b>	<b>56.46%</b>	<b>44,320.05</b>	<b>78,500.00</b>	<b>-34,179.95</b>	<b>56.46%</b>
4100 · LABOR - FISHERIES	535,636.65	908,841.00	-373,204.35	58.94%	0.00				535,636.65	908,841.00	-373,204.35	58.94%
4200 · VEHICLES & EQUIP - FISHERIES												
4270 · Vehicle/Equip Mtce	10,456.60	30,000.00	-19,543.40	34.86%	0.00				10,456.60	30,000.00	-19,543.40	34.86%
4280 · Fixed Capital	1,173.73	20,000.00	-18,826.27	5.87%	0.00				1,173.73	20,000.00	-18,826.27	5.87%
4290 · Miscellaneous	0.00	2,500.00	-2,500.00	0.0%	0.00				0.00	2,500.00	-2,500.00	0.0%
<b>Total 4200 · VEHICLES &amp; EQUIP - FISHERIES</b>	<b>11,630.33</b>	<b>52,500.00</b>	<b>-40,869.67</b>	<b>22.15%</b>	<b>0.00</b>				<b>11,630.33</b>	<b>52,500.00</b>	<b>-40,869.67</b>	<b>22.15%</b>
4220 · CONTRACT LABOR - FISHERIES												
4221 · Meters & Valves	1,720.11	3,000.00	-1,279.89	57.34%	0.00				1,720.11	3,000.00	-1,279.89	57.34%
4222 · Fish Projects Maintenance	4,951.02	15,000.00	-10,048.98	33.01%	0.00				4,951.02	15,000.00	-10,048.98	33.01%
<b>Total 4220 · CONTRACT LABOR - FISHERIES</b>	<b>6,671.13</b>	<b>18,000.00</b>	<b>-11,328.87</b>	<b>37.06%</b>	<b>0.00</b>				<b>6,671.13</b>	<b>18,000.00</b>	<b>-11,328.87</b>	<b>37.06%</b>
4300 · MATERIALS/SUPPLIES - FISHERIES												
4390 · Miscellaneous	4,595.38	8,250.00	-3,654.62	55.7%	0.00				4,595.38	8,250.00	-3,654.62	55.7%
<b>Total 4300 · MATERIALS/SUPPLIES - FISHERIES</b>	<b>4,595.38</b>	<b>8,250.00</b>	<b>-3,654.62</b>	<b>55.7%</b>	<b>0.00</b>				<b>4,595.38</b>	<b>8,250.00</b>	<b>-3,654.62</b>	<b>55.7%</b>
4500 · OTHER EXPENSES - FISHERIES												
4502 · Uniforms	3,476.38	5,000.00	-1,523.62	69.53%	0.00				3,476.38	5,000.00	-1,523.62	69.53%
4503 · Permits	1,079.00	8,000.00	-6,921.00	13.49%	0.00				1,079.00	8,000.00	-6,921.00	13.49%
<b>Total 4500 · OTHER EXPENSES - FISHERIES</b>	<b>4,555.38</b>	<b>13,000.00</b>	<b>-8,444.62</b>	<b>35.04%</b>	<b>0.00</b>				<b>4,555.38</b>	<b>13,000.00</b>	<b>-8,444.62</b>	<b>35.04%</b>
4999 · GENERAL & ADMINISTRATIVE												
5000 · Director Fees	0.00				4,332.25	12,400.00	-8,067.75	34.94%	4,332.25	12,400.00	-8,067.75	34.94%
5001 · Director Mileage	0.00				221.48	600.00	-378.52	36.91%	221.48	600.00	-378.52	36.91%
5100 · Legal	0.00				14,407.00	75,000.00	-60,593.00	19.21%	14,407.00	75,000.00	-60,593.00	19.21%
5101 · Audit	0.00				22,239.75	22,750.00	-510.25	97.76%	22,239.75	22,750.00	-510.25	97.76%
5150 · Unemployment Tax	0.00				0.00	5,000.00	-5,000.00	0.0%	0.00	5,000.00	-5,000.00	0.0%
5200 · Liability Insurance	0.00				57,871.52	55,100.00	2,771.52	105.03%	57,871.52	55,100.00	2,771.52	105.03%
5310 · Postage/Office Exp	0.00				4,485.48	6,000.00	-1,514.52	74.76%	4,485.48	6,000.00	-1,514.52	74.76%
5311 · Office Equip/Leases	0.00				4,876.89	13,440.00	-8,563.11	36.29%	4,876.89	13,440.00	-8,563.11	36.29%
5312 · Misc Admin Expenses	0.00				8,603.03	11,000.00	-2,396.97	78.21%	8,603.03	11,000.00	-2,396.97	78.21%
5313 · Communications	0.00				4,617.05	9,500.00	-4,882.95	48.6%	4,617.05	9,500.00	-4,882.95	48.6%
5314 · Utilities	0.00				6,722.24	9,737.00	-3,014.76	69.04%	6,722.24	9,737.00	-3,014.76	69.04%
5315 · Membership Dues	0.00				12,268.90	11,700.00	568.90	104.86%	12,268.90	11,700.00	568.90	104.86%
5316 · Admin Fixed Assets	0.00				1,222.90	12,000.00	-10,777.10	10.19%	1,222.90	12,000.00	-10,777.10	10.19%
5318 · Computer Consultant	0.00				15,604.68	35,000.00	-19,395.32	44.59%	15,604.68	35,000.00	-19,395.32	44.59%
5325 · Emp Training/Subscriptions	0.00				0.00	2,000.00	-2,000.00	0.0%	0.00	2,000.00	-2,000.00	0.0%
5330 · Admin Travel	0.00				1,496.09	3,500.00	-2,003.91	42.75%	1,496.09	3,500.00	-2,003.91	42.75%
5331 · Public Information	0.00				1,331.57	3,500.00	-2,168.43	38.05%	1,331.57	3,500.00	-2,168.43	38.05%
<b>Total 4999 · GENERAL &amp; ADMINISTRATIVE</b>	<b>0.00</b>				<b>160,300.83</b>	<b>288,227.00</b>	<b>-127,926.17</b>	<b>55.62%</b>	<b>160,300.83</b>	<b>288,227.00</b>	<b>-127,926.17</b>	<b>55.62%</b>
5299 · ADMIN LABOR	0.00				487,011.66	769,375.00	-282,363.34	63.3%	487,011.66	769,375.00	-282,363.34	63.3%

**Cachuma Operation & Maintenance Board**  
**Statement of Revenues and Expenditures (Unaudited)**  
 Budget vs. Actuals July 2025 - June 2026

	Fisheries				Operations				TOTAL			
	Jul '25 - Jan 26	Budget	\$ Over / (Under) Budget	% of Budget	Jul '25 - Jan 26	Budget	\$ Over / (Under) Budget	% of Budget	Jul '25 - Jan 26	Budget	\$ Over / (Under) Budget	% of Budget
<b>5400 · GENERAL &amp; ADMIN - FISHERIES</b>												
5407 · Legal - FD	2,670.50	25,000.00	-22,329.50	10.68%	0.00				2,670.50	25,000.00	-22,329.50	10.68%
5410 · Postage / Office Supplies	2,447.76	4,000.00	-1,552.24	61.19%	0.00				2,447.76	4,000.00	-1,552.24	61.19%
5411 · Office Equipment / Leases	2,625.98	8,533.00	-5,907.02	30.77%	0.00				2,625.98	8,533.00	-5,907.02	30.77%
5412 · Misc. Admin Expense	4,410.45	7,500.00	-3,089.55	58.81%	0.00				4,410.45	7,500.00	-3,089.55	58.81%
5413 · Communications	2,486.13	4,455.00	-1,968.87	55.81%	0.00				2,486.13	4,455.00	-1,968.87	55.81%
5414 · Utilities	3,619.67	5,243.00	-1,623.33	69.04%	0.00				3,619.67	5,243.00	-1,623.33	69.04%
5415 · Membership Dues	7,435.70	7,200.00	235.70	103.27%	0.00				7,435.70	7,200.00	235.70	103.27%
5416 · Admin Fixed Assets	658.48	5,000.00	-4,341.52	13.17%	0.00				658.48	5,000.00	-4,341.52	13.17%
5418 · Computer Consultant	8,402.51	20,000.00	-11,597.49	42.01%	0.00				8,402.51	20,000.00	-11,597.49	42.01%
5425 · Employee Education/Subscription	0.00	2,500.00	-2,500.00	0.0%	0.00				0.00	2,500.00	-2,500.00	0.0%
5426 · Director Fees	2,332.75	6,700.00	-4,367.25	34.82%	0.00				2,332.75	6,700.00	-4,367.25	34.82%
5427 · Director Mileage	119.23	300.00	-180.77	39.74%	0.00				119.23	300.00	-180.77	39.74%
5430 · Travel	2,715.32	4,000.00	-1,284.68	67.88%	0.00				2,715.32	4,000.00	-1,284.68	67.88%
5431 · Public Information	717.05	1,500.00	-782.95	47.8%	0.00				717.05	1,500.00	-782.95	47.8%
5441 · Audit	11,975.25	12,250.00	-274.75	97.76%	0.00				11,975.25	12,250.00	-274.75	97.76%
5443 · Liab & Property Ins	31,161.58	29,800.00	1,361.58	104.57%	0.00				31,161.58	29,800.00	1,361.58	104.57%
<b>Total 5400 · GENERAL &amp; ADMIN - FISHERIES</b>	<b>83,778.36</b>	<b>143,981.00</b>	<b>-60,202.64</b>	<b>58.19%</b>	<b>0.00</b>				<b>83,778.36</b>	<b>143,981.00</b>	<b>-60,202.64</b>	<b>58.19%</b>
<b>5499 · ADMIN LABOR-FISHERIES</b>	<b>215,135.72</b>	<b>342,004.00</b>	<b>-126,868.28</b>	<b>62.9%</b>	<b>0.00</b>				<b>215,135.72</b>	<b>342,004.00</b>	<b>-126,868.28</b>	<b>62.9%</b>
5510 · Integrated Reg. Water Mgt Plan	0.00				0.00	5,000.00	-5,000.00	0.0%	0.00	5,000.00	-5,000.00	0.0%
<b>6199 · SPECIAL PROJECTS</b>												
6097 · GIS and Mapping	0.00				5,152.50	10,000.00	-4,847.50	51.53%	5,152.50	10,000.00	-4,847.50	51.53%
6100 · Watershed Sanitary Survey	0.00				1,150.00	75,000.00	-73,850.00	1.53%	1,150.00	75,000.00	-73,850.00	1.53%
6105 · ROW Management Program	0.00				735.00	20,000.00	-19,265.00	3.68%	735.00	20,000.00	-19,265.00	3.68%
6110 · SCADA Improvements & Support	0.00				9,086.26	35,000.00	-25,913.74	25.96%	9,086.26	35,000.00	-25,913.74	25.96%
6115 · COMB Blding Improvemnts & Maint	0.00				12,429.50	80,000.00	-67,570.50	15.54%	12,429.50	80,000.00	-67,570.50	15.54%
6126 · 2024 Winter Storm Repairs	0.00				42,809.13	600,000.00	-557,190.87	7.14%	42,809.13	600,000.00	-557,190.87	7.14%
6138 · Water Quality & Sediment Mgmt	0.00				22,812.75	40,000.00	-17,187.25	57.03%	22,812.75	40,000.00	-17,187.25	57.03%
<b>Total 6199 · SPECIAL PROJECTS</b>	<b>0.00</b>				<b>94,175.14</b>	<b>860,000.00</b>	<b>-765,824.86</b>	<b>10.95%</b>	<b>94,175.14</b>	<b>860,000.00</b>	<b>-765,824.86</b>	<b>10.95%</b>
<b>6000 · INFRASTRUCTURE IMPROVEMENT PROJ</b>												
6043 · Lauro Res Intake Design& Repair	0.00				41,397.00	75,000.00	-33,603.00	55.2%	41,397.00	75,000.00	-33,603.00	55.2%
6045 · Critical Access Rd Maint & Rep	0.00				36,200.00	50,000.00	-13,800.00	72.4%	36,200.00	50,000.00	-13,800.00	72.4%
6072 · Tecolote Tunnel Weep Hole Resto <sup>(3)</sup>	0.00				0.00	0.00	0.00	0.0% #	0.00	0.00	0.00	0.0%
6075 · Multi-Site Renwble Energy Resil	0.00				0.00	125,000.00	-125,000.00	0.0%	0.00	125,000.00	-125,000.00	0.0%
6096 · Lower Reach BlowOff AVAR Valve <sup>(4)</sup>	0.00				0.00	40,000.00	-40,000.00	0.0%	0.00	40,000.00	-40,000.00	0.0%
6102 · Lauro Bypass Channel Road Imprv	0.00				6,857.00	1,245,000.00	-1,238,143.00	0.55%	6,857.00	1,245,000.00	-1,238,143.00	0.55%
6107 · North Portal Elevator Mod	0.00				0.00	100,000.00	-100,000.00	0.0%	0.00	100,000.00	-100,000.00	0.0%
6123 · Sheffield Tunnel Insp/Eval SCC	0.00				45,229.00	130,000.00	-84,771.00	34.79%	45,229.00	130,000.00	-84,771.00	34.79%
6128 · Lauro Outlet Wrks Tunnel Safety	0.00				19,195.36	125,000.00	-105,804.64	15.36%	19,195.36	125,000.00	-105,804.64	15.36%
6133 · Meter Replacement Project	0.00				0.00	100,000.00	-100,000.00	0.0%	0.00	100,000.00	-100,000.00	0.0%
6134 · N.P. IT/Control Bldg Seismic	0.00				0.00	150,000.00	-150,000.00	0.0%	0.00	150,000.00	-150,000.00	0.0%

**Cachuma Operation & Maintenance Board**  
**Statement of Revenues and Expenditures (Unaudited)**  
 Budget vs. Actuals July 2025 - June 2026

	Fisheries				Operations				TOTAL			
	Jul '25 - Jan 26	Budget	\$ Over / (Under) Budget	% of Budget	Jul '25 - Jan 26	Budget	\$ Over / (Under) Budget	% of Budget	Jul '25 - Jan 26	Budget	\$ Over / (Under) Budget	% of Budget
6139 · Tecolote Tunn Concrete Deterior <sup>(5)</sup>	0.00				0.00	50,000.00	-50,000.00	0.0%	0.00	50,000.00	-50,000.00	0.0%
6140 · Critical Control Valve Replcmnt <sup>(3) (4) (5)</sup>	0.00				91,727.80	325,000.00	-233,272.20	28.22%	91,727.80	325,000.00	-233,272.20	28.22%
<b>Total 6000 · INFRASTRUCTURE IMPROVEMENT PROJ</b>	<b>0.00</b>				<b>240,606.16</b>	<b>2,515,000.00</b>	<b>-2,274,393.84</b>	<b>9.57%</b>	<b>240,606.16</b>	<b>2,515,000.00</b>	<b>-2,274,393.84</b>	<b>9.57%</b>
<b>6200 · PROGRAM SUPPORT SERVICES</b>												
6201 · BO/FMP Implementation	3,170.00	45,000.00	-41,830.00	7.04%	0.00				3,170.00	45,000.00	-41,830.00	7.04%
6202 · GIS and Mapping	3,302.50	10,000.00	-6,697.50	33.03%	0.00				3,302.50	10,000.00	-6,697.50	33.03%
6205 · USGS Stream Gauge Program	26,297.50	110,000.00	-83,702.50	23.91%	0.00				26,297.50	110,000.00	-83,702.50	23.91%
<b>Total 6200 · PROGRAM SUPPORT SERVICES</b>	<b>32,770.00</b>	<b>165,000.00</b>	<b>-132,230.00</b>	<b>19.86%</b>	<b>0.00</b>				<b>32,770.00</b>	<b>165,000.00</b>	<b>-132,230.00</b>	<b>19.86%</b>
<b>6300 · HABITAT IMPROVEMENT PROJECTS</b>												
6207 · Oak Tree Restoration Program	221.35	5,000.00	-4,778.65	4.43%	0.00				221.35	5,000.00	-4,778.65	4.43%
6303 · Tributary Projects Support	6,399.98	10,000.00	-3,600.02	64.0%	0.00				6,399.98	10,000.00	-3,600.02	64.0%
6320 · Hilton Creek Habitat Improvemen	0.00	65,000.00	-65,000.00	0.0%	0.00				0.00	65,000.00	-65,000.00	0.0%
<b>Total 6300 · HABITAT IMPROVEMENT PROJECTS</b>	<b>6,621.33</b>	<b>80,000.00</b>	<b>-73,378.67</b>	<b>8.28%</b>	<b>0.00</b>				<b>6,621.33</b>	<b>80,000.00</b>	<b>-73,378.67</b>	<b>8.28%</b>
<b>Total Expense</b>	<b>\$ 901,394.28</b>	<b>\$ 1,731,576.00</b>	<b>\$ (830,181.72)</b>	<b>52.06%</b>	<b>\$ 2,186,435.72</b>	<b>\$ 6,523,601.00</b>	<b>\$ (4,337,165.28)</b>	<b>33.52%</b>	<b>\$ 3,087,830.00</b>	<b>\$ 8,255,177.00</b>	<b>\$ (5,167,347.00)</b>	<b>37.41%</b>
<b>Net Surplus / Deficit</b>	<b>\$ 308,728.59</b>	<b>\$ -</b>	<b>\$ 308,728.59</b>	<b>100.0%</b>	<b>\$ 1,759,565.71</b>	<b>\$ -</b>	<b>\$ 1,759,565.71</b>	<b>100.0%</b>	<b>\$ 2,068,294.30</b>	<b>\$ -</b>	<b>\$ 2,068,294.30</b>	<b>100.0%</b>

- (1) O&M Budget assessemnts (Ops) reflect a credit adjustment of \$445K for the net cost of the Lauro Reservoir Bypass Channel Improvement project pending a FEMA/CalOES notice of funding approval.
- (2) Vehicle and Equipment (Ops) includes purchase of John Deere 333 P-Tier Track Loader with attachments (\$110.5K) and new on-call vehicle (\$48.5k)
- (3) Includes a budget transfer in the amount of \$100,000 from Account #6072 - Tecolote Tunnel Weep Hole Restoration to Account #6140 - Critical Control Valve Replacement. Approved by the COMB Board of Directors on September 22, 2025
- (4) Includes a budget transfer in the amount of \$50,000 from Account #6096 - SCC Structure Rehabilitation to Account #6140 - Critical Control Valve Replacement. Approved by the COMB Board of Directors on September 22, 2025
- (5) Includes a budget transfer in the amount of \$100,000 from Account #6139 - Tecolote Tunnel Concrete Deterioration to Account #6140 - Critical Control Valve Replacement. Approved by the COMB Board of Directors on September 22, 2025

# CACHUMA OPERATION & MAINTENANCE BOARD

## BOARD MEMORANDUM

Date:	February 23, 2026
Submitted by:	Janet Gingras

---

**SUBJECT:** Investment Report – January 31, 2026

---

### **RECOMMENDATION**

The Board of Directors receive and file the Cachuma Operation & Maintenance Board Investment Report as of January 31, 2026.

### **DISCUSSION**

Cash and investment programs are maintained in accordance with California Government Code Section 53600 et seq. and COMB's adopted investment policy. These policies ensure proper control and safeguards are maintained throughout the financial transaction process. Pursuant to State law, the COMB Board adopts a detailed investment policy through a Board resolution on an annual basis.

Reports on COMB's investment portfolio and cash position are developed and presented to the COMB Board on a monthly basis, in conformity with the California Government Code.

#### Unrestricted Cash

Unrestricted cash exceeding current operating needs is invested in LAIF to generate interest income. The average effective yield rate, as of January 2026, is reported at 3.93%.

See Table 1 below for a summary of balances held in unrestricted accounts.

Table 1			
Unrestricted Reserve Funds			
Local Agency Investment Fund (LAIF)			
	12/31/2025	\$	1,215,818.09
(+) Deposits/Credits			520,069.35
(-) Checks/Withdrawals			(354,000.00)
Statement Balance	1/31/2026	\$	1,381,887.44

#### Restricted Cash

The Cachuma Project Warren Act Trust Fund (Trust Fund) and Cachuma Project Master Contract Renewal Fund (Renewal Fund) are two separate funds that have been established through contracts with the U.S. Bureau of Reclamation (Reclamation). The Trust Fund and the Renewal Fund require annual and five-year plans which are used to inform the Funds Committee in making decisions on expenditures for betterment of the Cachuma Project.

See Table 2 below for a summary of balances held in restricted accounts.

Table 2			
Restricted Reserve Funds			
American Riviera Bank			
Renewal Account			
Previous Balance	12/31/2025	\$	122,074.64
(+) Deposits/Credits			-
(-) Checks/Withdrawals			(23,808.51)
Statement Balance	1/31/2026	\$	98,266.13
American Riviera Bank			
Warren Act Trust Fund			
Previous Balance	12/31/2025	\$	43,499.54
(+) Deposits/Credits			4,085.00
(-) Checks/Withdrawals			-
Statement Balance	1/31/2026	\$	47,584.54

**STATEMENT**

The above statement of investment activity for the month of January 2026, complies with legal requirements for investment policy of government agencies, AB 1073. I hereby certify that it constitutes a complete and accurate summary of all American Riviera Bank and LAIF investments of this agency for the period indicated.

  
 \_\_\_\_\_  
 Secretary

## Cachuma Operation & Maintenance Board

### Paid Claims

As of January 31, 2026

Date	Num	Name	Memo	Amount
<b>1050 - General Fund</b>				
01/05/2026	32442	Aspect Engineering Group	SCADA Improvements & Support (Ops)	-875.00
01/05/2026	32443	AT&T	Long Distance Service December 2025	-42.99
01/05/2026	32444	City of Santa-Barbara	Trash & Recycling December 2025	-400.43
01/05/2026	32445	Culligan of Ventura County	Operations Safety	-88.00
01/05/2026	32446	ECHO Communications	Message Service January 2026	-114.00
01/05/2026	32447	Farwest Corrosion Control Co.	Annual Cathodic Protection Survey (Ops)	-3,840.00
01/05/2026	32448	Federal Express	Shipping (Ops)	-181.12
01/05/2026	32449	Frontier Communications	Phone Service - North Portal	-83.45
01/05/2026	32450	Frontier Communications	Phone Service - Main Office Land Lines	-209.19
01/05/2026	32451	Marborg Industries	Portable Facilities - Outlying Stations	-530.61
01/05/2026	32452	O'Connor Pest Control	Exterminator Services - Glen Annie Canyon	-160.00
01/05/2026	32453	Rain for Rent Santa Paula	Equipment Rental - Carpinteria Reservoir Cleaning (Ops)	-20,835.00
01/05/2026	32454	Southern California Edison	Electricity - Main Office & Outlying Stations	-1,733.18
01/05/2026	32455	Underground Service Alert of So. Calif.	Ticket Charges & Database Fee	-146.00
01/05/2026	32456	WEX Fleet Universal	Fleet Fuel (Ops & Fisheries)	-2,247.08
01/05/2026	32457	White Cap, L.P.	Supplies (Ops)	-5.09
01/05/2026	32458	Zac Gonzalez Landscaping & Tree Care	Landscape Maintenance December 2025	-480.00
01/12/2026	32459	Aseva	Phone Service - Main Office	-767.74
01/12/2026	32460	Association of Ca Water Agencies/JPIA	February 2026 Health Benefits Premium	-44,296.88
01/12/2026	32461	Bedrock Building Supplies	Hilton Creek Gravel (Fisheries)	-635.84
01/12/2026	32462	Coastal Copy, Inc.	Copier Maintenance - Kyocera Taskalfas 2554ci & 6054ci	-635.64
01/12/2026	32463	County of Santa--Barbara	Waste Disposal Fee (Ops)	-40.00
01/12/2026	32464	Eurofins Drinking Water and Wastewater W.	Cachuma Water Quality Testing (Ops)	-1,331.50
01/12/2026	32465	GEI Consultants Inc.	Lauro Reservoir Intake Assessment - Intake Structure Engineering Support (Ops)	-12,952.00
01/12/2026	32466	Harrison Hardware	Supplies (Ops & Fisheries)	-109.01
01/12/2026	32467	Home Depot Credit Services	Supplies (Ops & Fisheries)	-1,258.65
01/12/2026	32468	McCrometer, Inc.	Supplies - Replacement Head for Lateral 1 Meter (Ops)	-928.39
01/12/2026	32469	Milpas Rental	Equipment Rental (Ops)	-238.11
01/12/2026	32470	Paychex, Inc. (Payroll)	Payroll & Payroll Tax Services 11/07/2025, 11/21/2025, 12/05/2025 & 12/19/2025	-543.80
01/12/2026	32471	SB Home Improvement Center	Supplies - (Fisheries)	-14.40
01/12/2026	32472	SB Stone	Hilton Creek Gravel (Fisheries)	-492.17
01/12/2026	32473	Southern California Edison	Electricity - Outlying Stations (Ops)	-15.24
01/12/2026	32474	Turenchalk Network Services, Inc.	WatchGuard Firewall 3 Year Security Suite (Ops & Fisheries)	-1,929.23
01/12/2026	32475	Turenchalk Network Services, Inc.	Network Support (Ops & Fisheries)	-3,557.86
01/12/2026	32476	Verizon Wireless	Cellular Service - Wireless Modems, Cell Phones & iPads (Ops)	-692.79
01/12/2026	32477	West Marine Pro	Water Quality Buoy Supplies (Ops)	-561.00
01/20/2026	32478	ACWA-Joint Powers Insurance Authority	Workers Compensation Program 10/01/2025 - 12/31/2025	-10,818.75
01/20/2026	32479	Cabela's LLC/Bass Pro LLC	Personal Protective Equipment - Fishing Waders & Wading Boots (Fisheries)	-758.43
01/20/2026	32480	Cox Communications Santa Barbara	Business Internet January 2026	-234.65
01/20/2026	32481	Employee Relations, Inc.	Pre-Employment Background Check (Fisheries)	-221.16
01/20/2026	32482	HDR Engineering, Inc.	Cachuma Project Fisheries Assistance Scope of Work FY 2025-26	-12,541.00
01/20/2026	32483	J&C Services	Office Cleaning Service - 11/21/2025, 11/26/2025, 12/05/2025 & 12/09/2025	-1,230.00
01/20/2026	32484	LoopUp, LLC	Conference Calls December 2025	-26.62
01/20/2026	32485	Sansum Clinic-Occupational Medicine	Pre-Employment Physical (Fisheries)	-621.00
01/20/2026	32486	Securitas Technology Corp	Security System Maintenance - 02/01/2026 through 04/30/2026	-184.08
01/20/2026	32487	Smartsheet Inc	Project Management Software License Renewal	-1,145.40
01/20/2026	32488	Southern California Edison	Electricity - Outlying Stations (Ops)	-0.93
01/20/2026	32489	The Gas Company	Natural Gas - Main Office	-61.58
01/20/2026	32490	Wells Fargo Vendor Fin Serv	Copier Lease - Kyocera Taskalfa 2554ci & 6054ci	-451.34
01/26/2026	32491	A-OK Power Equipment-SB	Supplies (Ops)	-54.45
01/26/2026	32492	American Water Works Association	AWWA Membership Dues 04/01/2026 through 03/31/2027	-539.00
01/26/2026	32493	Applied EarthWorks, Inc.	Critical Control Valve Replacement - Cultural Resources Inventory (Ops)	-5,192.30
01/26/2026	32494	Cushman Contracting Corp.	EPFP Pumping System - Pay Req 140	-3,500.00
01/26/2026	32495	Eurofins Drinking Water and Wastewater W.	Cachuma Water Quality Testing (Ops)	-616.50
01/26/2026	32496	Famcon Pipe & Supply	Supplies (Ops)	-479.84
01/26/2026	32497	Federal Express	Shipping (Ops)	-224.04
01/26/2026	32498	Freeboard Technology, LLC	Lake Cachuma - Water Quality Buoy Support (Ops)	-11,160.00
01/26/2026	32499	Musick, Peeler & Garrett LLP	General Counsel December 2025	-2,587.50
01/26/2026	32500	O'Connor Pest Control	Exterminator Services - COMB Headquarters, North Portal & Glen Annie Canyon	-655.00

**Cachuma Operation & Maintenance Board**  
**Paid Claims**  
**As of January 31, 2026**

Date	Num	Name	Memo	Amount
01/26/2026	32501	PG&E	Electricity - Tecolote Tunnel	-24.68
01/26/2026	32502	Quinn Company	Lauro Yard Generator Cooling System Service & Battery Replacement (Ops)	-2,884.22
01/26/2026	32503	Quinn Company	North Portal Generator Cooling System Service & Battery Replacement (Ops)	-2,953.63
01/26/2026	32504	SB Home Improvement Center	Supplies - (Ops)	-10.48
01/26/2026	32505	Specialty Tool, LTD	Supplies (Ops)	-340.61
01/26/2026	32506	Staples Business Credit	Office Supplies (Ops & Fisheries)	-333.66
01/31/2026		COMB-Petty Cash	Reimburse Petty Cash January 2026	-272.09
Total 1050 · General Fund				<u>-163,094.33</u>
<b>TOTAL</b>				<b><u>-163,094.33</u></b>

APPROVALS

---



---



---

# CACHUMA OPERATION & MAINTENANCE BOARD

## MEMORANDUM

Date:	February 23, 2026
Submitted by:	Edward Lyons
Approved by:	Janet Gingras

---

**SUBJECT: Director Compensation Required Public Notifications**

---

**RECOMMENDATION:**

Receive information related to Director compensation required public notifications and provide direction to staff as appropriate, including directing staff to post the required public notifications related to the Director Compensation discussion to be held at the March 23, 2026 regular Board meeting.

**SUMMARY:**

The Cachuma Operation and Maintenance Board (COMB) Directors are compensated for the service they provide in official capacities. Specifically, Ordinance No. 6 adopted in 2025 provides for Directors' fees and mileage allowance for attendance at COMB Board meetings and COMB Committee meetings. The current allowance for Directors' compensation is set at \$215.00 per meeting for each Director or their alternate. The current mileage allowance for a Director or their alternate is set at the adjusted Internal Revenue Service allowable travel expense reimbursement mileage rate as it may be set from time-to-time.

California Water Code (Water Code) Section 20202 provides for annual updates to Director Compensation, in an amount not to exceed 5% for each year that has elapsed since compensation was previously increased. The Water Code also limits compensation to ten (10) days per month. Accordingly, listed below are two options for consideration:

- **Option 1: No change to existing compensation.** Directors' compensation would remain at \$215.00 per meeting.
- **Option 2: Incremental increase up to 5%.** The maximum compensation increase allowed is 5% for each year since the prior effective Ordinance was adopted. The prior effective Ordinance was adopted in March 2025 with applicable Director compensation effective in May 2025. Compensation per meeting would be determined based on the percentage increase selected up to a maximum of \$225.75 per day for each meeting or event attended.

No action is necessary to implement option 1. To pursue option 2, the Board of Directors should direct that notice of consideration of an ordinance to increase compensation be published in a newspaper for two successive weeks prior to its adoption, per the California Water Code. State law also requires a 14-day notice period from the date the public hearing is first noticed in the newspaper. Accordingly, the Board of Directors could adopt an ordinance to increase Director compensation at its March 23, 2026 meeting.

In addition, there is a 60-day waiting period after the ordinance is adopted by the Board for it to become effective. If directed, staff will post the notice according to legal requirements. Consequently, if the ordinance is adopted at the March 23, 2026 Board meeting, the increase to Director compensation would be effective for days of service after May 23, 2026.

**FISCAL IMPACTS:**

COMB's budget provides \$20,000 for annual expenses related to Director compensation. The proposed change to Director Compensation will not affect the budgeted line item.

**LEGAL CONCURRENCE:**

Legal Counsel has reviewed the necessary procedures to implement a change to Director compensation.

**LIST OF EXHIBITS:**

- 1) Draft Ordinance No. 7

**ORDINANCE NO. 7**

**ORDINANCE OF THE GOVERNING BOARD OF THE  
CACHUMA OPERATION AND MAINTENANCE BOARD  
AMENDING ORDINANCE NO. 6  
SETTING THE COMPENSATION FOR DIRECTORS OF THE BOARD  
PURSUANT TO SECTIONS 20200 THROUGH 20207 OF THE WATER CODE**

**RECITALS**

- A. Sections 20200 through 20207 of the Water Code of the State of California provides for a method by which members (Directors) of the Governing Board may be compensated for their work and services in carrying out their duties as Directors and in carrying out the business of the Cachuma Operation and Maintenance Board.
- B. The Governing Board, by adoption of Ordinance No. 6 on March 31, 2025, elected to set the compensation of its Directors pursuant to Water Code Sections 20200 through 20207.
- C. The Governing Board has, by adoption of this Ordinance, elected to amend Ordinance No. 6.
- D. Notice of a Public Hearing as a part of the Governing Board's regular meeting held on March 23, 2026 was published pursuant to Section 6066 of the Government Code and Section 20207 of the Water Code.
- E. Proof of Publication of said Notice in the Santa Barbara Independent on March 5, 2026 and March 12, 2026 has been filed with the records of the regular meeting held on March 23, 2026.
- F. The Public Hearing on the adoption of this Ordinance was held on March 23, 2026 prior to the adoption of this Ordinance as required by Section 20203 of the Water Code.

**BE IT ORDAINED by the Governing Board of the Cachuma Operation and Maintenance Board, Paragraph 1 is amended to read as follows:**

- 1. As provided in Water Code Section 20201, the compensation of each member of the Governing Board (or that members alternate) shall be the sum of \$ \_\_\_ for each day of attendance at a regular or special meeting of the Board of Directors, or for each day's service rendered as a member of the Board by request of the Board.

The compensation set by this Ordinance shall be for no more than a total of ten (10) days in any calendar month.

- 2. As provided in Water Code Section 30507, each Director shall be reimbursed for any expenses incurred in the performance of any duty required or authorized by the Governing Board, in addition to the compensation provided for in Section 1 above.

3. This Ordinance repeals any prior action of this Board providing for any automatic increases in the compensation of the Board, as of the effective date of this Ordinance.
4. This Ordinance shall be effective sixty (60) days following its adoption.
5. This Ordinance shall be published one time within ten (10) days following its adoption.

**PASSED, APPROVED AND ADOPTED by the Governing Board of the Cachuma Operation and Maintenance Board on this 23<sup>st</sup> day of March, 2026 by the following vote:**

**AYES:**  
**NAYS:**  
**ABSTAIN:**  
**ABSENT:**

APPROVED

\_\_\_\_\_  
President of the Board

ATTEST:

\_\_\_\_\_  
Secretary of the Board



Mission Statement:

*“To provide a reliable source of water to our member agencies in an efficient and cost effective manner for the betterment of life in our communities.”*

February 23, 2026

## **General Manager Report**

The following summary provides the Board with information and an overview of progress on current COMB activities.

### Administration

- **USBR 2<sup>nd</sup> Period 2026 Water Rates Invoice**

Staff will soon be submitting the USBR 2026 2<sup>nd</sup> period water rates invoices to the Cachuma Project Member Units for payment to Reclamation which is due early April. The Water Year (WY) 2026 rates are calculated using the Member Units projected deliveries for the water year in addition to projected Cachuma Project O&M reimbursable costs for the same period. For WY 2026 water rates, a small deficit was recognized from the 2024 Cachuma Project financial statement for operations. The deficit was applied and collected during the 1<sup>st</sup> period semi-annual payment.

- **ACWA/JPIA Medical Insurance Incentive Rate Application**

COMB recently applied for the incentive rates offered through ACWA/JPIA's medical insurance program. Employers qualifying with certain program participation requirements will receive a 4% discount on Anthem and Kaiser medical plan premiums. If approved by ACWA, COMB would reduce annual expenditures for medical insurance premiums by approximately \$20,000.

### U.S. Bureau of Reclamation

- **Spill/Surplus Status**

In late January, spillway releases were transitioned from the Bradbury Dam holding gates to the outlet works and Hilton Creek due to diminished inflows. With storm conditions occurring last week, Reclamation re-implemented spillway releases through the holding gates as the watershed renewed production of inflow to the lake. The challenge on recession flows is to target optimum lake storage while carefully managing the remaining inflow, reservoir level and outflow, and consideration of the fishery downstream. Operational adjustments in response to current hydrologic conditions continue to be made by Reclamation. The lake is at full capacity and surplus water has remained available since January 1, 2026.

Respectfully submitted,

*Janet Gingras*

General Manager

**THIS PAGE INTENTIONALLY LEFT BLANK**

# CACHUMA OPERATION AND MAINTENANCE BOARD

## MEMORANDUM

**DATE:** February 23, 2026  
**TO:** Janet Gingras, General Manager  
**FROM:** Joel Degner, Engineer/Operations Division Manager  
**RE: MONTHLY ENGINEERING REPORT**

The following summary provides the Board with information and an overview of progress by engineering staff related to on-going studies and infrastructure improvement projects.

### **CLIMATE CONDITIONS AND LAKE ELEVATION**

The County of Santa Barbara rainfall water year-to-date is 188% of normal with a total of 34.26 inches accumulated at Gibraltar Reservoir (as of 2/17/26). The cumulative inflow as of February 17<sup>th</sup>, 2026 is 153,838 AF with a total spillway release of over 94,000 AF. According to Water Right Order 2019-0148 this is classified as a Wet Year (>117,842 AF) and Table 2 releases were required starting February 15<sup>th</sup>. Spillway releases are currently in excess of the Table 2 flow requirements. All carryover and non-Project water stored in the lake spilled by December 31<sup>st</sup>, 2025 and Reclamation declared a surplus condition starting on January 1<sup>st</sup>, 2026 which continues.

### **BRADBURY DAM OUTLET WORKS MAINTENANCE**

Reclamation replaced the valve on the 10-inch outlet and modified the valve gearing to go back into the building in mid-January. There were issues with the initial install on the valve gearing. Maintenance staff from Friant Dam came down February 10<sup>th</sup> to install a support bearing on the valve extension stem on the 10-inch valve. On February 11<sup>th</sup> with the support bearing installed and the with valve actuator fully operational, Caltrol set the open, close, and torque limits on the motorized valve actuator on the 10-inch valve.

### **RECLAMATION WATER MANAGEMENT WORKSHOP 2026**

Reclamation annually provides the Water Management Workshop at their Denver Technical Services Center (TSC). The TSC is a technical and professional support organization that provides science, engineering, research, laboratory services and expertise bureau-wide. The workshop is provided at no cost to Reclamation reserved works employees and transferred works contractors (like COMB). COMB staff (Joel Degner and Elijah Papen) attended the conference from February 10<sup>th</sup> to 12<sup>th</sup>. COMB was invited to provide a presentation at the workshop on February 12<sup>th</sup>, 2026 regarding the Sheffield Tunnel Inspection and Rehabilitation project. The workshop included technical sessions regarding operation and maintenance, design and installation of pipeline systems, water measurement, facility condition and risk assessment, remote sensing, vegetation management and pest control, and RO&M recommendations. It also included hands on labs on concrete testing and repair, geotechnical testing, hydraulics (including viewing of the scale-model warehouse), materials and corrosion, and invasive species control.

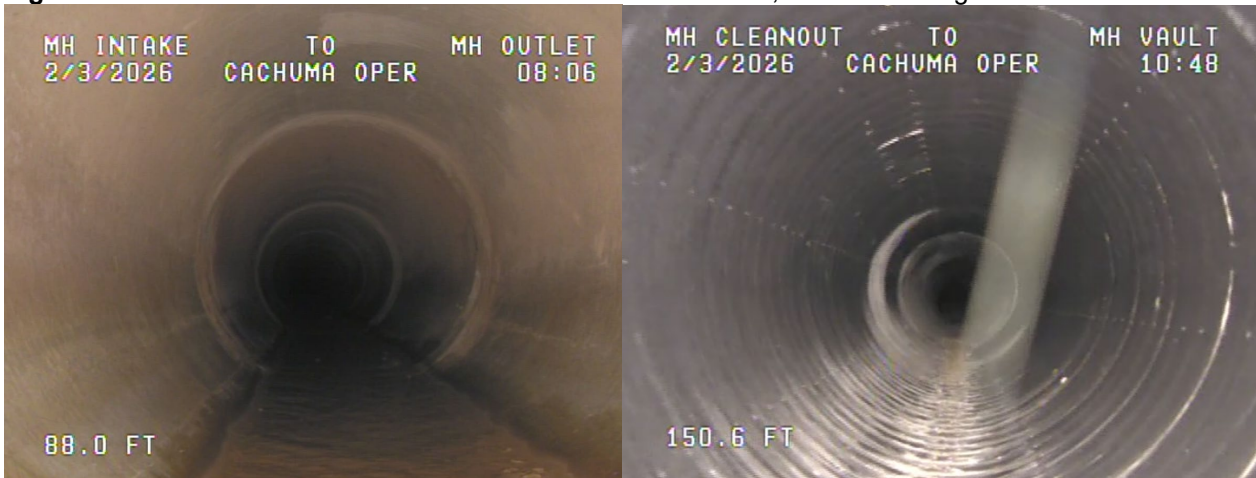
### **LAURO RESERVOIR CAMERA INSPECTIONS**

Performance Pipe Technologies inspected the 24" HDPE storm drain around Lauro Reservoir, the 30" reinforced concrete pipe Lauro Dam spillway conduit, and the 18" HDPE Lauro Dam Fault Drain on February 2<sup>nd</sup> and 3<sup>rd</sup>. The 24" storm drain was in decent condition although approximately 200 feet of it was being impacted by root intrusion through the joints. COMB staff removed the small trees in the area where the root intrusion was noted. Several areas also had sections of mineralized deposits from the invert of the drain that had broken free and created small obstacles for the camera in the pipeline (Figure 1). Lauro Dam 30" spillway conduit was all clear. There are hardened mineralized deposits on the invert throughout the conduit (Figure 2). In September 2023 the stilling well was vacuumed out after it had been clogged by storms in 2023. At the time there was sediment observed in the lower portion of the 30" spillway conduit. With the stilling basin, subsequent storms in 2024-2026 washed out the sediment that had accumulated in the conduit. The spillway conduit was generally in good

condition although some portions of the pipeline had small cracks in the RCP and in the lower half of the pipeline, groundwater intrusion into some joints and associated mineralization was noted. The 18-inch fault drain was inspected as well. The fault drain was installed during the seismic retrofit in 2006 at Lauro Dam. It was in good condition with no sediment observed and no defects in the piping. One portion of the fault drain was too steep to inspect. Performance Pipe Technologies also visited the east and west portals of Sheffield Tunnel. They are one of the few companies that have the equipment for inspecting drinking water pipelines and are interested in performing an inspection of the interior of the Sheffield Tunnel Pipeline, though it will be a logistical and access challenge.



**Figure 1.** 24” Lauro Reservoir Storm Drain – root intrusion on left, sediment on right



**Figure 2.** Lauro Dam Spillway Conduit 30” RCP (left), Lauro Dam Fault Drain 18” Perforated HDPE

**WINTER STORM 2025-2026 and 2024 DAMAGE REPAIRS AND REIMBURSEMENT**

The County issued a local emergency declaration following the 2025/2026 Holiday Storms. COMB identified minor culvert repairs, access road debris removal and debris basin sedimentation as potential impacts. COMB staff completed the debris removal from access roads and culvert repair in February. The sedimentation impacts to the debris basin do not appear to be too significant with 1-2 feet of sediment accumulation observed after the basins were dewatered. Sediment is typically removed in the Summer/Fall timeframe to allow the sediment to dry out for easier transport.

A federal disaster was declared in California for the January 31 to February 9th, 2024 storms (DR-4769). COMB has repaired all five damages related to the 2024 Winter Storm prior to the deadline of October 15<sup>th</sup>, 2025. FEMA provided COMB with an eligibility determination memo on September 15<sup>th</sup>, 2025 which denied COMB’s claim for reimbursement for the Lauro Inflow Structure Slide repair. COMB received several payments on obligated sites in the past several months from FEMA and CalOES. One project is still pending award. COMB applied for a grant for the Lauro Reservoir Bypass Channel Improvements under the 404 Hazard Mitigation Grant Program. FEMA is waiting for the Environmental and Historic Preservation (EHP) review to be completed by Reclamation before

requesting the funds. Reclamation hopes to be completed in May 2026. Staffing shortages (~50 percent) in the cultural resources division have caused project delays on all Reclamation projects. Table 1 provides a summary of the costs and reimbursements to date.

**Table 1. 2024 Winter Storm Damage Summary Table**

Site	Cat	Location	Work Type	Estimated Cost	% Complete	Estimated Reimbursible	Received as 2/18/26	FEMA Status
<i>Fiscal Year 2023-24</i>								
COMB Access Road Debris Removal	A	South Portal/Glen Anne Turnout/Sheffield/Lauro	Force Account	\$ 32,636	100%	\$32,636	\$31,208	Funded
Boy Scout Debris Basin Erosion Repairs	D	Lauro Reservoir	Force Account	\$ 7,823	100%	\$7,334	\$7,481	Funded
<i>Fiscal Year 2024-25</i>								
Lauro Debris Basin Sediment Removal	D	Lauro Reservoir	Contract	\$ 188,885	100%	\$177,080	\$180,621	Funded
Lauro Reservoir Inflow Structure Slide Repairs	D	Lauro Reservoir	Contract&Force Account	\$ 45,000	100%	\$0	\$0	Denied - natural slope damage is not eligible without damaged infrastructure
<i>Fiscal Year 2025-26</i>								
Glen Anne Turnout Road Slump	C	Glen Anne Turnout	Contract&Force Account	\$ 95,000	100%	\$79,688	\$0	Pending Award
<b>Total</b>				<b>\$ 369,344</b>	<b>100%</b>	<b>\$ 296,738</b>	<b>\$ 219,310</b>	

**INFRASTRUCTURE IMPROVEMENT PROJECTS**

Table 2 provides the status of Fiscal Year 2025-26 infrastructure improvement and special projects.

**Table 2. Fiscal Year 2025-26 Infrastructure Improvement Projects**

Infrastructure Improvement Projects	Status / Phase	Complexity / Challenges	Estimated Completion Date
<b>Infrastructure Improvement Projects</b>			
Lauro Outlet Works Tunnel Safety Improvements	Diani completed construction in July 2025. COMB staff installed a floor-mounted davit and upgraded the phone communication system with several additional check-in points along the tunnel. Additional work planned in the tunnel include coating maintenance on the pipeline and hydraulic line, grouting to prevent water intrusion, and removal of mineral buildup.	The new door reduces the engulfment risk and provides easier access into the Lauro Tunnel to perform needed work.	April 2026
North Portal Elevator Modifications	RFP to evaluate the elevator and propose modifications is being prepared to send to elevator rehabilitation contractors. COMB staff is also evaluating adding stairs and door to the elevator control room at the top of the elevator shaft to improve access for maintenance, inspection, and operation.	High lake levels in 2026 will likely cause increased seepage in the elevator shaft which can affect electrical sensors and increase corrosion making the elevator less reliable.	March 2026 for evaluation, design of door and stairs initiated in March as well.
SCC Structure Rehabilitation	Several remaining blowoffs need preventative rehabilitation to prevent unplanned outages. All AVARs on the SCC have been raised above grade.	Shutdowns of the SCC are normally planned in low demand months outside of fire season.	April 2026
Lauro Reservoir Bypass Channel Road Repair	Final designs and bid documents have been prepared. FEMA is waiting on Reclamation environmental review to be complete to provide the funding award.	COMB has requested 404 HGMP mitigation funding for the improvement to the bypass channel.	October 2026
Sheffield Tunnel Evaluation and Repair	The tunnel was inspected in April 2025, joint condition assessment completed, contingency plan developed, with alternative repair options evaluation on-going. A topographic survey was initiated in October 2025 to assist with the engineering evaluation. A draft cultural resources inventory has been prepared.	Limited access constraints at the east and west portal as well as limited shutdown windows complicate the development of repair options.	May/June 2026 for engineering evaluation
Critical Access Road Maintenance and Repair	Repair work was completed on a portion of Glen Annie Road and a small portion of Lauro Yard parking area	Pavement repairs are generally scheduled in summer to prevent conflicts with upcoming winter storms.	Completed September 2025

Infrastructure Improvement Projects	Status / Phase	Complexity / Challenges	Estimated Completion Date
Lauro Reservoir Intake Assessment/Repair	A kickoff meeting was conducted between COMB, City of SB, MWD, and CVWD staff during the last week of September and the consultant has conducted the structural investigation. Consultant is preparing the draft designs, although a dive inspection is needed to complete the designs.	A dive or remote underwater vehicle inspection of the tower will likely be needed. Reclamation is only performing ROV inspections and the nearest ROV is from the Colorado River system. COMB may need to contract for a dive inspection separately.	The consultants plan to complete the engineering evaluation and have conceptual plans prepared in April 2026, following dive inspection.
North Portal Intake Tower Seismic Assessment	COMB submitted the project for a grant from the National Earthquake Hazards Reduction Program for FY 2026. The grant funding has a low probability of award. COMB is revising the scope of the RFP due to unavailability of grant funding.	The intake tower at Lake Cachuma is likely the most vulnerable structure in seismic event in the system. This study would determine how vulnerable it is and how to mitigate the risks.	COMB plans to issue the RFP in Winter 2025-26.
Critical Control Valve Replacement Project	COMB replaced three valves at Carpinteria Control station during a shutdown for cleaning in early December. COMB also plans to replace a meter and several valves at Sheffield Control Station in (CS) March/April 2026. COMB has received several of the valves and the meter for Sheffield. All parts have been ordered and waiting on delivery to finalize schedule for shutdown.	Valves at the control stations are over 70 years old with some valves frozen and other valves unable to isolate without excessive leak by.	Carp CS completed Dec 2025. March/April 2026 for Sheffield CS
Tecolote Tunnel Concrete Deterioration Investigation and Weepole Cleaning	Reclamation/COMB plans to conduct an initial inspection of the Tecolote Tunnel with an uncrewed vessel in spring 2026. The following year, after reviewing the inspection results a focused investigation is planned for the southern 1/3 of the tunnel where concrete deterioration and weepole clogging have been observed in the past.	Inspection limited to winter months. Geothermal water sources (115 deg F) and hydrogen sulfide gases complicate the tunnel inspection and work for personnel	May 2026 for uncrewed inspection vessel. December 2026 for focused inspection team.
Meter Replacement Program	COMB's meters require investment to maintain and improve the accuracy of water accounting. The meter planned to be replaced in 2026 is the Sheffield Control Station meter as part of the valve replacement project at the control station. Two meters in MWD have been problematic (Valley Club/Lateral 1 and may require replacement this year.) Validation testing of several existing meters was completed in February 2026.	Additional investments for meters may be needed to meet future state regulations.	June 2026
Multi-Site Renewable Energy and Resiliency	COMB was awarded a grant from SBAPCD for the installation of car chargers, solar system, and batteries. COMB staff entered in the grant agreement with SBAPCD. COMB has initiated the designs for the project.	The Cachuma Project is primarily a gravity-driven system with the only energy costs associated with electricity usage related to cathodic protection, lighting and ventilation, office equipment, and vehicle usage.	June 2026

Infrastructure Improvement Projects	Status / Phase	Complexity / Challenges	Estimated Completion Date
<b>Special Projects</b>			
2024 Winter Storm Repairs	Completed construction on all damage locations utilizing force account labor and equipment and contract labor.	Delays in environmental reviews required in-kind repairs versus mitigation solutions.	Complete
COMB Bldg./Ground Repair	<p>The board room roof repair was completed in February. The operations building roof was inspected in more detail and a leak was found and repaired. A portion of the wall where the leak occurred will need to be refurbished. The contractor plans to pressure wash the roof once forecast for clear weather.</p> <p>COMB also plans to potentially install an Automatic Transfer Switch (ATS) for the electrical system at Lauro Reservoir.</p>	ATS was not included as part of grant proposal. Lauro office remains the only portion of COMB facilities that does not automatically transfer to backup power in a power outage.	June 2026
Water Quality and Sediment Management	COMB staff is preparing a CE-QUAL model for Lake Cachuma. A preliminary model has been developed which models temperature. Additional temperature sensors in the tributaries are planned along with increased phosphorous samples in the tributaries.	Water quality has improved substantially as a result of the 2023 and 2024 winters with much lower TOC and reduced algal blooms.	No major projects are planned but model development will continue along with existing data collection activities.

## CACHUMA OPERATION AND MAINTENANCE BOARD

**DATE:** February 23, 2026  
**TO:** Janet Gingras, General Manager  
**FROM:** Shane King, Operations Supervisor  
**RE:** **MONTHLY REPORT OF OPERATIONS – January 2026**

The total flow from Lake Cachuma into the Tecolote Tunnel for January was 1,067.94 acre-feet, for an average daily flow of 34.45 acre-feet. Lake elevation was 751.43 feet at the beginning of January and 753.87 feet at the end of January. Lake storage increased by 7,594 acre-feet. There was 0 acre-feet of inflow from CCWA into Cachuma Project facilities this month. The City of Santa Barbara wheeled 199.55 acre-feet of water from the Gibraltar Penstock through Lauro Reservoir. The Hilton Creek Watering System was utilized and delivered 448.65 acre-feet of water to Hilton Creek for the month of January.

The Operations Division of the Cachuma Operation and Maintenance Board has the responsibility to operate, repair and maintain all Cachuma Project facilities from the Intake Tower at Lake Cachuma to the Carpinteria Reservoir. The Annual Work Plan sets forth all activities necessary to ensure system reliability. Consistent with the Plan, Operation and Maintenance staff performs routine maintenance on the distribution and storage system. Staff continues to improve the system, address deficiencies, and identify items to be included in the Infrastructure Improvement Program of work. Operations Division is responsible for:

- Adequately regulating and maintaining the diversion of water from Lake Cachuma to the South Coast via the Tecolote Tunnel as the primary water source for 5 communities.
- Operation and maintenance of the South Coast Conduit pipeline, which consists of 26.5 miles of pipeline with a combined 124 blow off and air vent structures, 43 turnout structures and 20 meters.
- Operation and maintenance of four regulating reservoirs.

South Coast Conduit - Structure Inventory													
Reach	Endpoints	Linear Length (ft)	Pipe Diameter	Regulating Storage Reservoirs	Meters	Air Vents	Blow-Offs	Turnouts	Open Air Vents	Valves	Valve Size	Slide Gates	Capacity / Volume (gal)
<b>Upper</b>	Glen Annie Turnout (S. Portal) - Cater Water Treatment Plant	64,050	48"	2	5	32	35	18	2	115	4" - 48"	7	6,017,421
<b>Lower</b>	Cater Water Treatment Plant - Carpinteria Reservoir	90,910	27" - 36"	2	15	26	31	42	4	144	4" - 36"	-	3,190,171

Routine operation and maintenance completed during the month of January were as follows:

- Staff has been on site monitoring several ongoing projects throughout the area, working closely with the construction and engineering contractors to ensure that:
  - Pipeline easements and the right-of-way remain accessible to Operations staff for possible emergencies and ongoing facility maintenance.
  - All projects are following the COMB and USBR approved plans.
  - No damage occurs to the SCC during the construction process.

**Ongoing Monthly Operations Items:**

- Conducted several flow changes at the North Portal during the month
- Reviewed several projects for conflicts within the SCC right of way
- Received and responded to 116 USA Dig alerts
- Performed weekly inspections of major facilities, safety meetings, rodent bait (all reservoirs), toe drain, and piezometer reads at Ortega (L23)
- Performed dam inspection and instrumentation reports (all reservoirs)
- Performed equipment and yard maintenance
- Performed monthly North Portal elevator maintenance with Otis
- Performed monthly water quality sampling
- Read and document anodes and rectifier data

**Safety related items completed this month:**

- Tailgate safety meeting discussions include: Lockout/tagout procedures, personal protective equipment, foot protection

**Future safety related item goals to be completed next month:**

- Order life jackets to be stored inside Ortega and Carpinteria Reservoirs
- Service the septic tank located at the North Portal control building
- Replace outside lighting on the North Portal control building
- Obtaining quotes to replace the garage door at the north portal control building
- Weekly tailgate safety meeting and discussions

**In addition to regular activities described above, Operations staff performed the following:**

- COMB staff assisted Reclamation with additional modifications to the motorized valve actuator for the 10-inch valve. The motorized actuator was moved inside the building from outside and additional support was added to the stems to help them operate smoother.
- COMB staff exercised the valves at Sheffield Control Station which includes 11 valves and needs to be completed during low demand periods.
- COMB staff replaced a section of metal culvert on Glen Annie Road that was bent and filled in with sediment due to a slide from the 2025-26 winter storms.
- In collaboration with Montecito Water District, COMB staff tested four MWD meters (Valley Club, East Valley Pump Station, Barker Pass Pump Station, and Ortega Pump Station). The meters were tested either through a benchtop test meter or pitot tube or combination of both tests. McCall Meters was the contractor utilized for the testing.
- COMB staff exercised the valves in the North Portal Gate Chamber including the guard valve and the bypass valves.
- Roof contractor (Landers) removed the tiles from the board room, replaced damaged roof sheathing, replaced the waterproofing underlayment and reset the tiles.
- COMB staff assisted Performance Pipe Technologies with inspecting the 24" storm drain around Lauro Reservoir, the 30" spillway conduit, and the 18" Lauro Fault. These inspections were outstanding recommendations from Reclamation.
- COMB staff repaired a leak in the 2-inch water supply line to COMB's upper yard.
- COMB staff purchased a new anchor and chain and redeployed the water quality buoy at Lake Cachuma near the Intake Tower after maintenance activities, software updates, and deep cleaning.

**Photos**

**Performance Pipe Technologies camera rover inspection around Lauro Reservoir**



**Reinstalled water quality buoy after maintenance work**



**COMB Board Room roof waterproofing replaced and tiles rehabbed and reset**



**CACHUMA OPERATION AND MAINTENANCE BOARD**  
**BOARD MEMORANDUM**

**DATE:** February 23, 2026  
**TO:** Janet Gingras, General Manager  
**FROM:** Tim Robinson, Fisheries Division Manager  
**RE: MONTHLY FISHERIES DIVISION REPORT**

**HIGHLIGHTS:**

- 2000 Biological Opinion target flows have been met by Reclamation through Lake Cachuma releases:
  - Hilton Creek (minimum of 2 cfs): Hilton Creek Watering System (HCWS) gravity flow to the Upper Release Point (URP) and Lower Release Point (LRP) (approximately 7.2 cfs) with over 45 cfs upper basin peak stormflow during January and February storms, together provided streamflows greater than target flows, which have been sustaining the *O. mykiss* population in the creek.
  - Highway 154 Bridge (minimum 5 cfs [+4.3 cfs, interim Water Board Order compliance] and Solvang Bridge [0 cfs] due to being on Table 1 flows since 2/16/25): Given that it is a wet year and cumulative lake inflow is well over 33,707 af, WRO 2019-0148 Table 2 flows are now required as of 2/15/26 at 48 cfs at Highway 154 Bridge and Solvang Bridge.
- Lake Cachuma spilling on 12/26/25 and is ongoing. Elevated tributary runoff across the LSYS basin continues to sustain high baseflows throughout January and February.
- The second year of gravel augmentation at Hilton Creek has been completed. Remaining is the final report that will be done after the spawning season.
- The LSYS lagoon opened to the ocean on 11/19/25 and remains open.

In compliance with the 2000 Cachuma Project Biological Opinion (BiOp) (NMFS, 2000) and WR Order 2019-0148, and as described in the 2000 Lower Santa Ynez River Fish Management Plan (SYRTAC, 2000) and the Monitoring Program in the 2000 Revised Biological Assessment (BA), the COMB-FD staff conducts routine monitoring of the steelhead/rainbow trout population and their habitat on the LSYS and tributaries below Bradbury Dam. The following is a list of activities carried out by COMB-FD staff since the last COMB Board Fisheries Division Report and has been broken out into categories.

**LSYS Steelhead Monitoring Elements:**

**Lake Profiles:** Lake Cachuma water quality measurements (temperature, dissolved oxygen concentration, pH, and turbidity) at one-meter intervals from the surface to the bottom of the lake (Lake Profile) are taken once a month at the Hilton Creek Watering System (HCWS) Intake Barge. This is near the deepest point in the lake and allows for monitoring of lake stratification, water quality conditions at the intake level for the HCWS, and lake-turnover. Due to the previous drought and the need to carefully monitor Lake Cachuma, lake profiles are being taken monthly throughout the year and are reported in the Annual Monitoring Summary/Report. The lake started to turnover with the mid-November storms. It has been a slow process this year and as of 1/6/26 it had completely turned over.

**Stranding Surveys:** COMB-FD staff has been conducting stranding surveys within the tributaries of the LSYR basin and the LSYR mainstem during flow cuts of the spill and after high stormflow events. When issues of drying habitats with degraded water quality are discovered, California Department of Fish and Wildlife (CDFW) are notified, and they conduct fish rescue/relocation efforts with COMB-FD staff assistance shortly thereafter. Rescued fish are being released upstream or within the LYSR mainstem. CDFW's efforts ran from May through July of WY2025. LSYR mainstem stranding surveys were initiated starting with the mid-November storms due to full basin flow that dropped off rapidly after peak flow and then continued after the late December and early January storms that spilled the reservoir.

**Redd Surveys:** Redd surveys are conducted approximately every two weeks from mid-December through May (depending on streamflow conditions). Surveys are conducted within the LSYR mainstem in Highway 154, Refugio, and Alisal reaches where access is permitted, and certain sections of Hilton, Quiota, and Salsipuedes/El Jaro creeks. The number of redds is reported in the Annual Monitoring Report/Summary.

**Migrant Trapping:** The 2026 Migrant Trapping Plan was provided to Reclamation on 12/18/25 who then submitted it to NMFS thereafter. This monitoring effort normally begins in January and continues through May depending on streamflow rates. The results are presented in the Annual Monitoring Summary. The Hilton Creek and Salsipuedes Creek traps were installed on 1/20/26. The LSYR Mainstem Trap was not installed due to high stormflow and spill conditions. The traps will be removed when we reach the 2000 BiOp ITS take limit. The results of the trapping program are presented in the Annual Monitoring Report. The Santa Ynez River Lagoon currently is open, and its status is routinely monitored.

**Monitoring Target Flows:** Monitoring for the required 2000 BiOp and WR 2019-0148 target flows are conducted by USGS and Reclamation for Hilton Creek and for the LSYR at the Highway 154 Bridge and Alisal Bridge. COMB-FD conducts spot flow measurements when requested.

The minimum target flow of 2 cfs to Hilton Creek was met throughout December and January with HCWS gravity flow to the URP and a small amount to the LRP (approximately 7.2 cfs) with peak upper basin stormflows in early January that were well above 45 cfs that dropped off after stormflows for an approximate average total baseflow of 9.4 cfs, or higher, throughout December and January as recorded by the USGS at the LRP that includes upper basin flows (often the USGS and Reclamation discharge readings do not match).

Bradbury Dam releases have been keeping river flows at the Highway 154 Bridge and the Alisal Bridge well above Table 1 compliance flows (5 cfs [+4.3] and (0 cfs), respectively, as of 2/14/26, and Table 2 flows as of 2/15/26 at well above 48 cfs at both compliance points. Target flows at the Highway 154 Bridge and Alisal Bridge were being met as recorded by the USGS at each site. The USGS recorded flows of well above 65 cfs after the start of the 12/26/25 spill at the Highway 154 Bridge and well above 180 cfs at the Alisal Bridge. Staff will continue to monitor habitat conditions after any flow cuts conducted by Reclamation or stormflow events. Stream temperatures as recorded at the two compliance points have been decreasing with the onset of fall and wet season conditions which has been favorable for the *O. mykiss* population.

The USGS stream gage at the Highway154 Bridge is operating as designed and contracted. This is a low flow gage that continually records stage but only records river discharges up to 65 cfs. Reclamation continues to work with the State Board to modify Term 18 and Term 25 to officially move the target flow compliance point to the new USGS gage site.

**Tributary Project Updates:**

All completed tributary projects are in good shape after all storm events in November, December, January and now in February with only minor repairs to the picket fencing under Quiota Creek crossing bridges.

Staff submitted a CDFW-FGRP grant application for the Hilton Creek Fish Passage and Habitat Enhancement Project but was unsuccessful. We are considering reapplying using comments received from reviewers to improve our grant application.

The second of a two-year project to conduct gravel augmentation in Hilton Creek started on 12/16/25 and has concluded. The final report will be done after the end of the spawning season in the summer.

**State Water Board Order WR 2019-0148:**

The following tasks were completed as requested by Reclamation for their required compliance with the Order WR (WRO) 2019-0148.

**Terms 18 and 25 (improved discharge monitoring at the Highway 154 compliance point):** In 2022, COMB worked with and then contracted the USGS to install a new stream gaging station just upstream of the Highway 154 Bridge on the Lower Santa Ynez River. The site was completed and activated on 10/1/22 and has been performing as designed and contracted since. Reclamation is in the process of obtaining State Board approval for transferring that compliance point. On 3/7/25, Reclamation responded to the State Board letter of 5/9/24. A technical advisory team will be meeting soon to discuss options on measuring the difference in flow rate between the new USGS Highway 154 gage site and the Highway 154 Bridge (approximately 1,200 ft).

**Term 19 (monitoring effectiveness of Table 2 flows):** In 2023, Reclamation asked COMB staff to facilitate and work with CCRB and the downstream interests to draft the initial Term 19 Study Plan to evaluate the benefits to the downstream fishery from Table 2 flows. Field observations and gained knowledge during the 2023 dry season led to a revised Term 19 Study Plan that is in final revisions with Reclamation. The technical advisory team met on 5/8/25 and a draft final Plan was drafted that is currently being reviewed by the downstream water users. Upon receiving those comments, a follow-up meeting of the Science Review Team will be scheduled.

**Term 20 (plan to complete all required plans within the WRO):** Reclamation submitted the initial Term 20 Plan on 1/23/20 that was revised on 3/17/20 and an addendum was submitted on 9/16/24 to the State Board. CDFW submitted comments. The State Board approved Reclamation's Term 20 Plan on 8/4/25 with multiple conditions and changes specifically to Term 24(a), Term 24(b), and Term 24(c) study plans. The local interest group (CCRB, Parent District, ID#1 and COMB) have met several times to discuss how best to assist Reclamation. Collective recommendations were sent by CCRB to Reclamation on 10/24/25. During the 11/18/25, and 12/9/25 BA/WRO Coordination calls, Reclamation had not reviewed submitted Member Unit comments and had not accepted the Board's approval of the Term 20 Plan. Reclamation had a conference call to discuss coordination efforts with no specific direction determined yet. Further discussions are forthcoming.

**Term 24(a) (fish passage around Bradbury Dam):** Reclamation organized a weeklong Value Planning Study (VPS) session from 9/16/24 to 9/20/24 to discuss the feasibility for fish passage around Bradbury Dam. COMB staff were requested by Reclamation to participate given our knowledge of the fishery and the Santa Ynez River watershed, plus our

participation in previous investigations of similar objectives. The final report from the VPS effort is under review by Reclamation.

**Term 27 (annual reporting):** This report documents the results of the annual monitoring effort and serves as the required compliance reporting for the 2000 Cachuma Project Biological Opinion and supports Reclamation's required Annual Report for Term 27 of the WRO 2019-0148. The State Board extended the deadline for the Annual Monitoring Reports (AMR) until the end of March. The WY2024 AMR was completed and submitted to Reclamation on 2/10/25 who then shortly thereafter submitted it to NMFS and CDFW for comments. Reclamation received comments from CDFW only on 3/27/25 on the WY2024 AMR and no further action was taken. The WY2023 AMR was submitted to NMFS and CDFW by Reclamation on 7/8/24.

### **Cachuma Project Biological Assessment:**

During 12/9/25 and 1/13/26 BA/WRO Coordination calls, Reclamation asked CCRB to assist them in coordinating the effort to review and finalize the revised Biological Assessment (BA) for the Cachuma Project. Once completed, the BA will be submitted to NMFS by Reclamation for consideration in their drafting of a new Cachuma Project Biological Opinion. An Ad Hoc Committee was formed to review each chapter and all appendices. That committee met on 1/29/26 to kick start the process. The next meeting has been scheduled for 3/10/26.

### **Hilton Creek Watering System (HCWS) and Emergency Backup System (HCEBS) Operation and Repairs:**

**HCWS and HCEBS:** The HCWS and HCEBS are owned, operated, and maintained by Reclamation. Reclamation technical staff continues to consider improvement options for the HCWS and HCEBS. The HCWS was initially constructed in 1999 then modified to its current configuration in 2004. Recent and notable changes or repairs to these two Hilton Creek delivery systems are as follows:

- The 1/9/23 storm damaged the HCWS pumping that has been non-operable since. COMB is unaware of any scheduled repairs. Reclamation is planning to repair the pumping barge sometime over the summer.
- The HCEBS floating pipeline across the Stilling Basin was disconnected on 2/7/23 and reconnected on 11/19-20/24.
- An operations team from Friant was on site on 6/24/25 to assess repair needs for the HCWS pumping barge. Once all the needed equipment is compiled, then the needed maintenance will be scheduled.
- Dam tenders detached the north side of the HCEBS floating pipeline across the Stilling Basin on 12/26/25 in association with the start of the spill event. This allowed it to swing freely and in theory be out of harms way during the spill event. There are no plans yet to reattach it.

### **Bradbury Dam Operations and Repairs:**

**Bradbury Dam and Outlet Works:** Bradbury Dam and the Outlet Works are owned, operated and maintained by Reclamation.

- On 4/11/23 and 4/12/23, Reclamation closed the Slide Gate on the Bradbury Dam Penstock to the Outlet Works and successfully replaced the stuck 30-inch valve with a blind flange then reopened the Slide Gate.

- During the week of 8/21/23, Reclamation replaced and tested on 11/10/23 all the Bradbury Dam radial gate lifting motors to return them to full operational condition.
- On 11/10/23, Reclamation reinstalling the refurbished 30-inch Outlet Works. There was no impact to the downstream fishery during the operation.
- On 2/12/25, Reclamation met at the Outlet Works to discuss options for valve repairs. A discussion with their technical staff is needed.
- On 7/21/25, Reclamation had a conference call with COMB to discuss their plans and timing to replace the 30-inch valves with 24-inch valves and the 10-inch valve at the Outlet Works that they hope to do in the winter of 2026-27. On 8/18/25, a conference call was held with COMB to discuss replacement of the 10-inch valve. Reclamation successfully replaced the 10-inch valve during the week of 1/12/26 that was provided by COMB, the valve controller was moved into the Outlet Works building, and a shield was installed to limit the amount of spray from the two 30-inch valves. The 10-inch valve actuator arms need to be better secured before the valve is fully operational. That effort has not yet been scheduled. The Penstock was recharged on 1/16/26 and the 30-inch valves opened up on 1/17/26 to approximately 180 cfs.
- The 10-inch valve at the Outlet Works was replaced by Reclamation during the week of 1/12/26 with further refinements to their installation on 2/10/26.

### Surcharge Water Accounting:

The following table summarizes the amount of surcharge water (defined as the amount of storage added to the lake by installing the flashboards to the top of the four radial gates to take the maximum lake elevation from 750 ft to 753 ft) used to date from each of the three accounts (Fish Passage Supplementation, Adaptive Management, and Fish Rearing) plus Unallocated Project Water at the end of last month (Table 1). All numbers are from the Reclamation's Daily Operations Report. The start time for the use of the Surcharge Water Accounts and Project Yield is the day following the last day of full surcharge and the end of the last spill event (the official end date for the WY2024 spill was declared on 6/21/24 by Reclamation). The WY2026 spill event started on 12/26/25 and all Surcharge Water Accounts were once again full, and debiting will start when Reclamation declares the spill is over as reflected in Table 1 using the 2021 bathymetric survey values.

**Table 1:** Summary of the surcharge water accounting and use of Project Yield as of 1/31/26, using the 2021 bathymetric survey data.

Accounts*	Allocation	Amount Used**	Amount Remaining
Units:	(acre-feet)	(acre-feet)	(acre-feet)
<b>Fish Passage Supplementation</b>			
<b>WY2026</b>	3,200	0	3,200
<b>Adaptive Management</b>	500	0	500
<b>Fish Rearing***</b>	5,527	0	5,527
<b>Unallocated Project Water</b>		0	0
<b>Total:</b>	9,227	0	9,227
* Originally was 9,200 af, 8,942 af in 2008, 9,184 af in 2013, and <b>9,227 af</b> in 2021.			
** Values as of 1/31/26.			
*** This water is for meeting required target flows. This is not an official account and is what remains after subtracting the other two accounts.			

## **Reporting / Outreach / Training:**

**Reporting:** Staff have been assisting Reclamation upon request in reviewing draft sections and conducting data analyses for their preparation of the new draft Biological Assessment and WR 2019-0148 required Plans. Staff have completed the WY2025 Annual Monitoring Report (AMR) and are nearing completion of the draft WY2025 Annual Monitoring Summary (AMS). The draft WY2025 AMR is now out for COMB internal review and will go to the FD Committee for their review shortly.

**Outreach and Training:** Outreach continues with Lower Santa Ynez River landowners (specifically in the Quiota Creek and Salsipuedes Creek watersheds), interested parties within the Santa Ynez Valley, and the County on a variety of fisheries related issues. The Senior Resource Scientist gave a presentation to IRWMP on 1/28/26 on the beaver and *O. mykiss* populations within the LSYR basin that was well received.

## **Consultant Activity Summary:**

**HDR Fisheries Design Center** (Mike Garelo and Shaun Bevan) – HDR conducted performance evaluations on multiple past tributary projects on 12/3-5/25. During that time, they also did ground truthing of instream elements for the pending Hilton Creek Fish Passage and Habitat Enhancement Project. All tasks were included in their SOW.

**Kenneth A. Knight Consulting** (Ken Knight) – No work was performed during this period on the established SOW tasks.

# CACHUMA OPERATION & MAINTENANCE BOARD

## BOARD MEMORANDUM

Date:	February 23, 2026
Submitted by:	Tim Robinson and Scott Volan
Approved by:	Janet Gingras

**SUBJECT:**     **Progress Report on the Lake Cachuma Oak Tree Restoration Program**

**RECOMMENDATION:**

The Board of Directors receive information on the status of the Lake Cachuma Oak Tree Restoration Program (Program) and provide direction to staff as appropriate.

**SUMMARY:**

This memorandum on the Lake Cachuma Oak Tree Restoration Program reflects maintenance completed since March 2025 to the present (3/1/25 – 2/23/26, Table 1). Labor and expenses as well as water usage for the entire fiscal year (7/1/25 – 6/30/26) are tracked separately and reported as necessary as recommended by the Lake Cachuma Oak Tree Committee. COMB staff continues to rely on the Fisheries Division (FD) seasonal employees whenever possible to conduct most of the oak tree work in the field. The 2015 Lakeshore Inventory was completed and reviewed by the Lake Cachuma Oak Tree Committee on 2/25/16, which set the mitigation numbers for the Program. The 2024 Annual Report with the annual inventory and Fiscal Year 2024-25 financials was completed and reviewed by the Lake Cachuma Oak Tree Committee on 8/18/25 and then approved by the COMB Board on 8/25/25 with recommendations for the forthcoming year.

**Table 1:** Cachuma Oak Tree Program completed maintenance tasks since March 2026.

	Mar 2025 <sup>1</sup>	April 2025 <sup>1</sup>	May 2025 <sup>1</sup>	June 2025 <sup>1</sup>	July 2025	Aug 2025	Sept 2025	Oct 2025	Nov 2025	Dec 2025 <sup>1</sup>	Jan 2026 <sup>1</sup>	Feb 2026 <sup>1</sup>
<b>Year 13 Oaks (2021-2022)</b>		Irrigated Weeded	Irrigated Weeded	Irrigated Weeded	Irrigated Weeded	Irrigated Weeded	Irrigated Weeded	Irrigated Weeded				
<b>Year 12 Oaks (2020-2021)</b>		Irrigated Weeded	Irrigated Weeded	Irrigated Weeded	Irrigated Weeded	Irrigated Weeded	Irrigated Weeded	Irrigated Weeded	Deer Cages	Deer Cages	Deer Cages	Deer Cages
<b>Year 11 Oaks (2019-2020)</b>									Deer Cages	Deer Cages	Deer Cages	Deer Cages
<b>Year 10 Oaks (2018-2019)</b>									Deer Cages			
<b>Year 9 Oaks (2016-2017)</b>												
<b>Year 8 Oaks (2015-2016)</b>												
<b>Year 7 Oaks (2014-2015)</b>												
<b>Year 6 Oaks (2005-2011)</b>												
<b>Year 5 Oaks (2009-2010)</b>												
<b>Year 1-4 Oaks (2005-2009)</b>												
<b>Year 1-3 Oaks (2005-2008)</b>												
<b>Year 2 Oaks (2006-2007)</b>												
<b>Year 1 Oaks (2005-2006)</b>												

<sup>1</sup>Oak tree inventory.

Summaries of specific tasks outside of routine maintenance are presented below.

### **SPECIFIC TASKS**

#### **Tree Irrigating/Weeding**

Heavy rainfall early in the water year has eliminated the need for irrigating oak trees. Only spot weeding has been done since the start of the wet season.

#### **Tree Planting**

There is no planting of new trees being considered for this year.

#### **Deer Cage Removal**

As time permits, staff have been systematically removing deer cages from planted oak trees that are over 6 feet in height. This will be an ongoing effort for some time.

#### **Annual Inventory**

The 2025 Annual Inventory of all year classes started in early December and is expected to continue through early spring. This will be the Oak Tree Programs last inventory where the mitigation requirement will be officially completed.

#### **End of Program Plan**

A Lake Cachuma Oak Tree End of Program Plan was presented to the Lake Cachuma Oak Tree Committee on 5/17/23 and presented to the COMB Board on 5/22/23 when it was then finalized. The Plan is being followed as presented.

### **COMMITTEE STATUS:**

Lake Cachuma Oak Tree Committee met on 8/18/25 to review the draft 2024 Annual Inventory with Fiscal Year 2024-25 financials. The Committee made the recommendation to continue maintenance on the most recent trees only. The next Committee meeting will be scheduled next year to review the 2025 Annual Report and Fiscal Year 2025-26 financials

### **LIST OF EXHIBITS:**

N/A



**WATER YEAR 25-26 CACHUMA PROJECT ALLOCATION**

**CACHUMA OPERATION AND MAINTENANCE BOARD  
WATER PRODUCTION AND WATER USE REPORT  
FOR THE MONTH OF JANUARY 2026 AND THE WATER YEAR TO DATE (WYTD) <sup>(1)</sup>**

(All in rounded Acre Feet)

<b>CACHUMA PROJECT</b>		
<b>WATER PRODUCTION:</b>	<b>MONTH</b>	<b>WYTD</b>
Cachuma Lake (Tec. Diversion)	1,012.7	5,849.1
Tecolote Tunnel Infiltration	94.7	330.4
Cachuma Lake (County Park)	0.9	6.4
<b>Subtotal - Water Production</b>	<b>1,108.3</b>	<b>6,185.9</b>
<b>WATER DELIVERIES:</b>		
State Water Diversion	0.0	179.6
Cachuma Diversion	1,209.7	6,168.9
Storage gain/(loss) <sup>(2)</sup>	(131.1)	(91.8)
<b>Subtotal - Water Deliveries</b>	<b>1,078.6</b>	<b>6,256.7</b>
<b>Total Water Production</b>	<b>1,108.3</b>	<b>6,185.9</b>
<b>Total Water Deliveries</b>	<b>1,078.6</b>	<b>6,256.7</b>
<b>Difference = Apparent Water Loss</b>	<b>29.7</b>	<b>(70.8)</b>
% Apparent Water Loss	2.68%	-1.14%

**SCC APPARENT WATER LOSS ALLOCATION (AWL) <sup>(3)</sup>**

	<b>GWD</b>	<b>SB CITY</b>	<b>MWD</b>	<b>CVWD</b>	<b>TOTAL</b>
<b>CURRENT MONTH CHARGE / (ADJUSTMENT)</b>					
M&I	0.0	0.0	0.0	0.0	0.0
Agriculture	0.0	0.0	0.0	0.0	0.0
Subtotal Cachuma Project	<b>0.0</b>	<b>0.0</b>	<b>0.0</b>	<b>0.0</b>	<b>0.0</b>
(+) State Water Project	0.0	0.0	0.0	0.0	0.0
<b>Total Current Month</b>	<b>0.0</b>	<b>0.0</b>	<b>0.0</b>	<b>0.0</b>	<b>0.0</b>
<b>WATER YEAR-TO-DATE CHARGE / (ADJUSTMENT)</b>					
M&I	0.0	0.0	0.0	0.0	0.0
Agriculture	0.0	0.0	0.0	0.0	0.0
Subtotal Cachuma Project	<b>0.0</b>	<b>0.0</b>	<b>0.0</b>	<b>0.0</b>	<b>0.0</b>
(+) State Water Project	0.0	0.0	0.0	0.0	0.0
<b>Total AWL Charged (WYTD)</b>	<b>0.0</b>	<b>0.0</b>	<b>0.0</b>	<b>0.0</b>	<b>0.0</b>
<b>Total AWL Not Charged (WYTD)</b>					<b>(70.8)</b>
<b>Total AWL Incurred (WYTD)</b>					<b>(70.8)</b>

**CACHUMA PROJECT WATER CHARGE**

	<b>GWD</b>	<b>SB CITY</b>	<b>MWD</b>	<b>CVWD</b>	<b>SYRID #1</b>	<b>TOTAL</b>
<b>CURRENT MONTH</b>						
Water Usage						
M&I	588.5	364.2	36.4	107.3	0.9	1,097.3
Agricultural	44.4	0.0	1.7	66.5	N/A	112.5
<b>Subtotal Project Water Use</b>	<b>632.8</b>	<b>364.2</b>	<b>38.1</b>	<b>173.7</b>	<b>0.9</b>	<b>1,209.7</b>
(+) Apparent Water Loss	0.0	0.0	0.0	0.0	N/A	0.0
(+) Evaporative Loss <sup>(4)</sup>	0.0	0.0	0.0	0.0	0.0	0.0
<b>Total Project Water Charge</b>	<b>632.8</b>	<b>364.2</b>	<b>38.1</b>	<b>173.7</b>	<b>0.9</b>	<b>1,209.7</b>
<b>WATER YEAR-TO-DATE</b>						
Water Usage						
M&I	2,484.9	2,244.0	157.1	417.1	6.4	5,309.4
Agricultural	472.6	0.0	11.0	375.9	N/A	859.5
<b>Subtotal Project Water Use</b>	<b>2,957.5</b>	<b>2,244.0</b>	<b>168.1</b>	<b>793.0</b>	<b>6.4</b>	<b>6,168.9</b>
(+) Apparent Water Loss	0.0	0.0	0.0	0.0	N/A	0.0
(+) Evaporative Loss <sup>(4)</sup>	43.5	156.7	42.3	26.3	22.0	290.9
<b>Total Project Water Charge (*)</b>	<b>3,001.0</b>	<b>2,400.7</b>	<b>210.4</b>	<b>819.3</b>	<b>28.4</b>	<b>6,459.8</b>

(\*) Project Water Charge is applied first to Carryover Water balance and then to Current Year Water Allocation

**WATER YEAR 25-26 CACHUMA PROJECT ALLOCATION**

**CACHUMA OPERATION AND MAINTENANCE BOARD  
WATER PRODUCTION AND WATER USE REPORT  
FOR THE MONTH OF JANUARY 2026 AND THE WATER YEAR TO DATE (WYTD) <sup>(1)</sup>**

(All in rounded Acre Feet)

**CACHUMA PROJECT WATER BALANCE**

	<b>GWD</b>	<b>SB CITY</b>	<b>MWD</b>	<b>CVWD</b>	<b>SYRID #1</b>	<b>TOTAL</b>
<b>Project Water Carryover - 10/1/2025</b>	4,758.7	14,295.9	3,723.1	2,547.2	1,900.1	27,225.0
(-) Project Water Charge (WYTD)	2,368.2	2,036.5	172.3	645.6	27.5	5,250.1
Carryover Available Before Adjustments	2,390.5	12,259.4	3,550.8	1,901.6	1,872.6	21,975.0
<b>Adjustments to Carryover (WYTD)</b>						
State Water Exchange <sup>(5)</sup>	0.0	0.0	0.0	0.0	0.0	0.0
Surplus	0.0	0.0	0.0	0.0	0.0	0.0
Carryover Spilled <sup>(6)</sup>	(2,390.5)	(12,259.4)	(3,550.8)	(1,901.6)	(1,872.6)	(21,975.0)
Transfers/Adjustment - GWD/La Cumbre	0.0	0.0	0.0	0.0	0.0	0.0
<b>Balance Project Water Carryover</b>	<b>0.0</b>	<b>0.0</b>	<b>0.0</b>	<b>0.0</b>	<b>0.0</b>	<b>0.0</b>
<b>Current Year Allocation <sup>(7)</sup></b>	<b>9,322.0</b>	<b>8,277.0</b>	<b>2,651.0</b>	<b>2,813.0</b>	<b>2,651.0</b>	<b>25,714.0</b>
(-) Balance of Project Water Charge (WYTD)	632.8	364.2	38.1	173.7	0.9	1,209.7
Allocation Available Before Adjustments	8,689.2	7,912.8	2,612.9	2,639.3	2,650.1	24,504.3
<b>Adjustments to Allocation (WYTD)</b>						
State Water Exchange <sup>(5)</sup>	59.0	39.0	39.0	27.0	(164.0)	0.0
Surplus <sup>(8)</sup>	632.8	364.2	38.1	173.7	0.9	1,209.7
Transfers/Adjustment - Bishop Ranch	0.0	0.0	0.0	0.0	0.0	0.0
Transfers/Adjustment - Juncal Transfer	0.0	0.0	0.0	0.0	0.0	0.0
Transfers/Adjustment - GWD/SB Overlap	0.0	0.0	0.0	0.0	0.0	0.0
<b>Balance Current Year Allocation</b>	<b>9,381.0</b>	<b>8,316.0</b>	<b>2,690.0</b>	<b>2,840.0</b>	<b>2,487.0</b>	<b>25,714.0</b>
<b>Total Cachuma Project Water Available</b>	<b>9,381.0</b>	<b>8,316.0</b>	<b>2,690.0</b>	<b>2,840.0</b>	<b>2,487.0</b>	<b>25,714.0</b>

**ACCUMULATED DROUGHT WATER CREDIT (ADWC) BALANCE <sup>(9)</sup>**

	<b>GWD</b>	<b>SB CITY</b>	<b>MWD</b>	<b>CVWD</b>	<b>SYRID #1</b>	<b>TOTAL</b>
<b>ADWC Balance - 10/1/2025</b>	0.0	0.0	0.0	0.0	0.0	0.0
(-) ADWC Water Charge (WYTD)	0.0	0.0	0.0	0.0	0.0	0.0
<b>Adjustments to ADWC (WYTD)</b>						
ADWC Spilled	0.0	0.0	0.0	0.0	0.0	0.0
<b>Balance ADWC</b>	<b>0.0</b>	<b>0.0</b>	<b>0.0</b>	<b>0.0</b>	<b>0.0</b>	<b>0.0</b>
<b>Total Cachuma Project + ADWC Available</b>	<b>9,381.0</b>	<b>8,316.0</b>	<b>2,690.0</b>	<b>2,840.0</b>	<b>2,487.0</b>	<b>25,714.0</b>

**Footnotes**

- (1) Water Year = October 1 through September 30; WYTD = Water Year to Date
- (2) Includes Lauro and Ortega Reservoirs only
- (3) Based on correspondence from Michael Jackson, dated 09/15/17, which revised the approach to the assessment for unaccounted for water loss based on lake conditions
- (4) Per USBR, evaporation is applied to Cachuma Carryover and SWP water through standard contract formula effective April 1, 2017
- (5) Per SWP Exchange Agrmt GWD received 0 AF; City of SB received 0 AF; MWD received 0 AF; and CVWD received 0 AF from ID#1 in January 2026
- (6) Spill releases from Bradbury Dam in December 2025 (22,916 AF) reduced SWP and Carryover accounts
- (7) Per USBR, 100% allocation to Member Units, effective 10/1/25
- (8) Per USBR, surplus water became available to Member Units beginning 1/1/26 and continues through January 2026
- (9) ADWC accrual for WY 2023, WY 2024, and WY 2025 is pending Reclamation determination
- (10) Memo only - State Water Deliveries to Lake Cachuma for January 2026 was 0 AF
- (11) Memo only - MWD has received 821.66 AF under the City of SB / MWD WSA ("Desal") for this Contract Year (July 1 - June 30)

**CACHUMA OPERATION AND MAINTENANCE BOARD**  
**WATER STORAGE REPORT**

MONTH: **JANUARY 2026**

**GLEN ANNIE RESERVOIR <sup>(1)</sup>**

Capacity at 385' elevation:	335	AF
Capacity at sill of intake at 334' elevation:	21	AF
Stage of Reservoir Elevation	<b>355.9</b>	Feet
Water in Storage	156.69	AF

**LAURO RESERVOIR**

Capacity at 549' elevation:	503	AF
Capacity at top of intake screen, 520' elevation:	106.05	AF
Stage of Reservoir Elevation	<b>539.6</b>	Feet
Water in Storage	336.07	AF

**ORTEGA RESERVOIR**

Capacity at 460' elevation:	65	AF
Capacity at outlet at elevation 440':	0	AF
Stage of Reservoir Elevation	<b>448.8</b>	Feet
Water in Storage	25.31	AF

**CARPINTERIA RESERVOIR**

Capacity at 384' elevation:	45	AF
Capacity at outlet elevation 362':	0	AF
Stage of Reservoir Elevation	<b>374.8</b>	Feet
Water in Storage	23.06	AF

**TOTAL STORAGE IN RESERVOIRS <sup>(1)</sup>**

Change in Storage	384.44	AF
	-132.43	AF

**CACHUMA RESERVOIR <sup>(2)</sup>**

Capacity at 750' elevation: <sup>(3)</sup>	183,751	AF
Capacity at sill of tunnel 660' elevation:	23,642	AF
Stage of Reservoir Elevation	<b>753.87</b>	Feet
Water in Storage	<b>195,711</b>	AF
Surface Area	<b>3,154</b>	Acres
Evaporation	<b>353.6</b>	AF
Inflow	<b>80,420.2</b>	AF
Downstream Release WR8918	<b>0.0</b>	AF
Fish Release (Hilton Creek)	<b>448.7</b>	AF
Outlet	<b>5905.0</b>	AF
Spill/Seismic Release	<b>67,337</b>	AF
State Water Project Water	<b>0.0</b>	AF
Change in Storage	<b>6,518</b>	AF
Tecolote Diversion	<b>1,067.9</b>	AF

**Rainfall:                      Month: 4.67    Year: 27.69    Inches**

(1) Glen Annie Reservoir is currently offline and excluded from Total Storage in Reservoirs amount.  
 (2) Lake Cachuma reservoir storage volume based on 2021 bathymetric survey (NGVD29)  
 (3) In 2004, flashboard installation raised Cachuma Reservoir max elevation to 753' (192,978 AF); surcharge



**SUMMARY OF WATER USED**  
**CACHUMA PROJECT - CONTRACT #175R-1802**

Contract Year: 10/1/25 to: 9/30/26

Contract Entity: **Goleta Water District**  
 Update by COMB 1/31/2026

Month	Carryover Balance Prior Yr	Approved Allocation Curr Yr
Oct	4,758.7	9,322.0
Nov	-	-
Dec	-	-
Jan	-	-
Feb	-	-
Mar	-	-
Apr	-	-
May	-	-
Jun	-	-
Jul	-	-
Aug	-	-
Sep	-	-
Total	4,758.7	9,322.0

TOTAL WATER USED			WATER USE CHARGED				WATER USE CHARGED				
Acre-feet			Allocation			Allocation			Total		
M & I	Agr	Total	Evap	Used	Total	M & I	Agr	M & I	Agr	Total	
770.5	238.4	1,008.9	27.0	1,008.9	1,036.0	787.6	248.4	-	-	-	
595.2	136.0	731.2	11.5	731.2	742.7	602.0	140.6	-	-	-	
530.7	53.8	584.5	5.1	584.5	589.6	533.4	56.2	-	-	-	
588.5	44.4	632.8	-	-	-	-	-	588.5	44.4	632.8	
-	-	-	-	-	-	-	-	-	-	-	
-	-	-	-	-	-	-	-	-	-	-	
-	-	-	-	-	-	-	-	-	-	-	
-	-	-	-	-	-	-	-	-	-	-	
-	-	-	-	-	-	-	-	-	-	-	
-	-	-	-	-	-	-	-	-	-	-	
-	-	-	-	-	-	-	-	-	-	-	
-	-	-	-	-	-	-	-	-	-	-	
2,484.9	472.6	2,957.5	43.5	2,324.6	2,368.2	1,923.0	445.2	588.5	44.4	632.8	

Month	CONVERSIONS (M&I AND AG SPLIT)			
	CARRYOVER WATER		CURR YR ALLOCATION	
	M & I	Agr	M & I	Agr
Oct	-	-	-	-
Nov	-	-	-	-
Dec	-	-	-	-
Jan	-	-	-	-
Feb	-	-	-	-
Mar	-	-	-	-
Apr	-	-	-	-
May	-	-	-	-
Jun	-	-	-	-
Jul	-	-	-	-
Aug	-	-	-	-
Sep	-	-	-	-

Month	SCHEDULE AND REVISIONS			SCHEDULE AND REVISIONS		
	Total	Allocation		Allocation		Total
		M & I	Agr	M & I	Agr	
Oct	4,758.7	3,002.5	1,756.2	6,644.0	2,678.0	9,322.0
Oct	ID#1 Exch (+59AF)	-	-	41.9	17.1	59.0
Nov	-	-	-	-	-	-
Dec	Carryover Spill (-2,390.5AF)	(2,390.5)	(1,248.0)	-	-	-
Jan	Surplus (632.8AF)	-	-	588.5	44.4	632.8
Feb	-	-	-	-	-	-
Mar	-	-	-	-	-	-
Apr	-	-	-	-	-	-
May	-	-	-	-	-	-
Jun	-	-	-	-	-	-
Jul	-	-	-	-	-	-
Aug	-	-	-	-	-	-
Sep	-	-	-	-	-	-

Month	BALANCE - CARRYOVER WATER			BALANCE - CURR YR ALLOC		
	Total	Allocation		Allocation		Total
		M & I	Agr	M & I	Agr	
Oct	3,722.8	2,214.9	1,507.9	6,685.9	2,695.1	9,381.0
Nov	2,980.1	1,612.9	1,367.2	6,685.9	2,695.1	9,381.0
Dec	-	-	-	6,685.9	2,695.1	9,381.0
Jan	-	-	-	6,685.9	2,695.1	9,381.0
Feb	-	-	-	-	-	-
Mar	-	-	-	-	-	-
Apr	-	-	-	-	-	-
May	-	-	-	-	-	-
Jun	-	-	-	-	-	-
Jul	-	-	-	-	-	-
Aug	-	-	-	-	-	-
Sep	-	-	-	-	-	-

TOTAL CACHUMA PROJECT BALANCE (CARRYOVER + CURRENT YR ALLOCATION) **9,381.0**

Footnotes

**SUMMARY OF WATER USED**  
**CACHUMA PROJECT - CONTRACT #175R-1802**

Contract Year: 10/1/25 to: 9/30/26

Contract Entity: **City of Santa Barbara**  
 Update by COMB 1/31/2026

Month	Carryover Balance Prior Yr	Approved Allocation Curr Yr
Oct	14,295.9	8,277.0
Nov	-	-
Dec	-	-
Jan	-	-
Feb	-	-
Mar	-	-
Apr	-	-
May	-	-
Jun	-	-
Jul	-	-
Aug	-	-
Sep	-	-
Total	14,295.9	8,277.0

TOTAL WATER USED			WATER USE CHARGED				WATER USE CHARGED			
Acre-feet						Allocation		Allocation		Total
M & I	Agr	Total	Evap	Used	Total	M & I	----	M & I	----	Total
768.7	-	768.7	88.4	768.7	857.1	857.1	-	-	-	-
652.6	-	652.6	44.8	652.6	697.4	697.4	-	-	-	-
458.4	-	458.4	23.6	458.4	482.0	482.0	-	-	-	-
364.2	-	364.2	-	-	-	-	-	364.2	-	364.2
-	-	-	-	-	-	-	-	-	-	-
-	-	-	-	-	-	-	-	-	-	-
-	-	-	-	-	-	-	-	-	-	-
-	-	-	-	-	-	-	-	-	-	-
-	-	-	-	-	-	-	-	-	-	-
-	-	-	-	-	-	-	-	-	-	-
-	-	-	-	-	-	-	-	-	-	-
-	-	-	-	-	-	-	-	-	-	-
2,244.0	-	2,244.0	156.7	1,879.8	2,036.5	2,036.5	-	364.2	-	364.2

Month	CONVERSIONS (M&I AND AG SPLIT)			
	CARRYOVER WATER		CURR YR ALLOCATION	
	M & I	Agr	M & I	Agr
Oct	-	-	-	-
Nov	-	-	-	-
Dec	-	-	-	-
Jan	-	-	-	-
Feb	-	-	-	-
Mar	-	-	-	-
Apr	-	-	-	-
May	-	-	-	-
Jun	-	-	-	-
Jul	-	-	-	-
Aug	-	-	-	-
Sep	-	-	-	-

Month	SCHEDULE AND REVISIONS				
	Total	Allocation		Allocation	
		M & I	----	M & I	----
Oct	14,295.9	14,295.9	-	8,277.0	-
Oct	ID#1 Exch (+39AF)	-	-	39.0	-
Nov					
Nov	Carryover Spill (-12,259.4AF)	(12,259.4)	(12,259.4)	-	-
Dec	Surplus (364.2AF)	-	-	364.2	-
Jan					
Jan					
Feb					
Feb					
Mar					
Mar					
Apr					
Apr					
May					
May					
Jun					
Jun					
Jul					
Jul					
Aug					
Aug					
Sep					
Sep					

Month	BALANCE - CARRYOVER WATER			BALANCE - CURR YR ALLOC		
	Total	Allocation		Allocation		Total
		M & I	----	M & I	----	
Oct	13,438.8	13,438.8	-	8,316.0	-	8,316.0
Nov	12,741.4	12,741.4	-	8,316.0	-	8,316.0
Dec	-	-	-	8,316.0	-	8,316.0
Jan	-	-	-	8,316.0	-	8,316.0
Feb	-	-	-	-	-	-
Mar	-	-	-	-	-	-
Apr	-	-	-	-	-	-
Apr	-	-	-	-	-	-
May	-	-	-	-	-	-
May	-	-	-	-	-	-
Jun	-	-	-	-	-	-
Jun	-	-	-	-	-	-
Jul	-	-	-	-	-	-
Jul	-	-	-	-	-	-
Aug	-	-	-	-	-	-
Aug	-	-	-	-	-	-
Sep	-	-	-	-	-	-
Sep	-	-	-	-	-	-

TOTAL CACHUMA PROJECT BALANCE (CARRYOVER + CURRENT YR ALLOCATION) **8,316.0**

Footnotes

**SUMMARY OF WATER USED**  
**CACHUMA PROJECT - CONTRACT #175R-1802**

Contract Year: 10/1/25 to: 9/30/26

Contract Entity: **Montecito Water District**  
 Update by COMB 1/31/2026

Month	Carryover Balance Prior Yr	Approved Allocation Curr Yr
Oct	3,723.1	2,651.0
Nov	-	-
Dec	-	-
Jan	-	-
Feb	-	-
Mar	-	-
Apr	-	-
May	-	-
Jun	-	-
Jul	-	-
Aug	-	-
Sep	-	-
Total	3,723.1	2,651.0

TOTAL WATER USED			WATER USE CHARGED				WATER USE CHARGED				
Acre-feet			Allocation			Allocation			Total		
M & I	Agr	Total	Evap	Used	Total	M & I	Agr	M & I	Agr	Total	
94.6	8.0	102.6	23.3	102.6	126.0	111.4	14.6	-	-	-	
4.3	0.3	4.6	12.3	4.6	16.9	13.1	3.8	-	-	-	
21.7	1.0	22.7	6.7	22.7	29.4	26.5	3.0	-	-	-	
36.4	1.7	38.1	-	-	-	-	-	36.4	1.7	38.1	
-	-	-	-	-	-	-	-	-	-	-	
-	-	-	-	-	-	-	-	-	-	-	
-	-	-	-	-	-	-	-	-	-	-	
-	-	-	-	-	-	-	-	-	-	-	
-	-	-	-	-	-	-	-	-	-	-	
-	-	-	-	-	-	-	-	-	-	-	
-	-	-	-	-	-	-	-	-	-	-	
-	-	-	-	-	-	-	-	-	-	-	
-	-	-	-	-	-	-	-	-	-	-	
157.1	11.0	168.1	42.3	130.0	172.3	150.9	21.4	36.4	1.7	38.1	

Month	CONVERSIONS (M&I AND AG SPLIT)			
	CARRYOVER WATER		CURR YR ALLOCATION	
	M & I	Agr	M & I	Agr
Oct	-	-	-	-
Nov	-	-	-	-
Dec	-	-	-	-
Jan	-	-	-	-
Feb	-	-	-	-
Mar	-	-	-	-
Apr	-	-	-	-
May	-	-	-	-
Jun	-	-	-	-
Jul	-	-	-	-
Aug	-	-	-	-
Sep	-	-	-	-

Month	SCHEDULE AND REVISIONS			SCHEDULE AND REVISIONS		
	Total	Allocation		Allocation		Total
		M & I	Agr	M & I	Agr	
Oct	3,723.1	2,672.1	1,051.0	2,244.0	407.0	2,651.0
Oct	ID#1 Exch (+39AF)	-	-	27.7	11.3	39.0
Nov	Carryover Spill (-3,550.8AF)	(3,550.8)	(2,521.1)	(1,029.7)	-	-
Dec	Surplus (38.1AF)	-	-	36.4	1.7	38.1
Jan	-	-	-	-	-	-
Feb	-	-	-	-	-	-
Mar	-	-	-	-	-	-
Apr	-	-	-	-	-	-
May	-	-	-	-	-	-
Jun	-	-	-	-	-	-
Jul	-	-	-	-	-	-
Aug	-	-	-	-	-	-
Sep	-	-	-	-	-	-

Month	BALANCE - CARRYOVER WATER			BALANCE - CURR YR ALLOC		
	Total	Allocation		Allocation		Total
		M & I	Agr	M & I	Agr	
Oct	3,597.2	2,560.7	1,036.5	2,271.7	418.3	2,690.0
Nov	3,580.3	2,547.6	1,032.6	2,271.7	418.3	2,690.0
Dec	-	-	-	2,271.7	418.3	2,690.0
Jan	-	-	-	2,271.7	418.3	2,690.0
Feb	-	-	-	-	-	-
Mar	-	-	-	-	-	-
Apr	-	-	-	-	-	-
May	-	-	-	-	-	-
Jun	-	-	-	-	-	-
Jul	-	-	-	-	-	-
Aug	-	-	-	-	-	-
Sep	-	-	-	-	-	-

TOTAL CACHUMA PROJECT BALANCE (CARRYOVER + CURRENT YR ALLOCATION) **2,690.0**

Footnotes

**SUMMARY OF WATER USED**  
**CACHUMA PROJECT - CONTRACT #175R-1802**

Contract Year: 10/1/25 to: 9/30/26

Contract Entity: **Carpinteria Valley Water District**  
 Update by COMB 1/31/2026

Month	Carryover Balance Prior Yr	Approved Allocation Curr Yr
Oct	2,547.2	2,813.0
Nov	-	-
Dec	-	-
Jan	-	-
Feb	-	-
Mar	-	-
Apr	-	-
May	-	-
Jun	-	-
Jul	-	-
Aug	-	-
Sep	-	-
Total	2,547.2	2,813.0

TOTAL WATER USED			WATER USE CHARGED			WATER USE CHARGED		
Acre-feet			Allocation			Allocation		
M & I	Agr	Total	Evap	Used	Total	M & I	Agr	Total
139.9	161.8	301.8	15.2	301.8	317.0	147.9	169.0	-
87.7	84.7	172.3	7.3	172.3	179.7	91.6	88.1	-
82.3	62.9	145.2	3.7	145.2	148.9	84.3	64.7	-
107.3	66.5	173.7	-	-	-	-	-	107.3
-	-	-	-	-	-	-	-	66.5
-	-	-	-	-	-	-	-	-
-	-	-	-	-	-	-	-	-
-	-	-	-	-	-	-	-	-
-	-	-	-	-	-	-	-	-
-	-	-	-	-	-	-	-	-
-	-	-	-	-	-	-	-	-
-	-	-	-	-	-	-	-	-
-	-	-	-	-	-	-	-	-
417.1	375.9	793.0	26.3	619.3	645.6	323.8	321.8	107.3
								66.5
								173.7

Month	CONVERSIONS (M&I AND AG SPLIT)			
	CARRYOVER WATER		CURR YR ALLOCATION	
	M & I	Agr	M & I	Agr
Oct	-	-	-	-
Nov	-	-	-	-
Dec	-	-	-	-
Jan	-	-	-	-
Feb	-	-	-	-
Mar	-	-	-	-
Apr	-	-	-	-
May	-	-	-	-
Jun	-	-	-	-
Jul	-	-	-	-
Aug	-	-	-	-
Sep	-	-	-	-

Month	SCHEDULE AND REVISIONS			SCHEDULE AND REVISIONS		
	Total	Allocation		Allocation		Total
		M & I	Agr	M & I	Agr	
Oct	2,547.2	1,341.0	1,206.2	1,406.5	1,406.5	2,813.0
Nov	-	-	-	19.2	7.8	27.0
Dec	-	-	-	-	-	-
Jan	(1,901.6)	(1,017.2)	(884.4)	-	-	-
Feb	-	-	-	107.3	66.5	173.7
Mar	-	-	-	-	-	-
Apr	-	-	-	-	-	-
May	-	-	-	-	-	-
Jun	-	-	-	-	-	-
Jul	-	-	-	-	-	-
Aug	-	-	-	-	-	-
Sep	-	-	-	-	-	-

Month	BALANCE - CARRYOVER WATER			BALANCE - CURR YR ALLOC		
	Total	Allocation		Allocation		Total
		M & I	Agr	M & I	Agr	
Oct	2,230.2	1,193.0	1,037.2	1,425.7	1,414.3	2,840.0
Nov	2,050.5	1,101.5	949.1	1,425.7	1,414.3	2,840.0
Dec	-	-	-	1,425.7	1,414.3	2,840.0
Jan	-	-	-	1,425.7	1,414.3	2,840.0
Feb	-	-	-	-	-	-
Mar	-	-	-	-	-	-
Apr	-	-	-	-	-	-
May	-	-	-	-	-	-
Jun	-	-	-	-	-	-
Jul	-	-	-	-	-	-
Aug	-	-	-	-	-	-
Sep	-	-	-	-	-	-

**TOTAL CACHUMA PROJECT BALANCE (CARRYOVER + CURRENT YR ALLOCATION)** 2,840.0

Footnotes

**SUMMARY OF WATER USED**  
**CACHUMA PROJECT - CONTRACT #175R-1802**

Contract Year: 10/1/25 to: 9/30/26

Contract Entity: **Santa Ynez River Water Conservation District, ID#1**  
 Update by COMB 1/31/2026

Month	Carryover Balance Prior Yr	Approved Allocation Curr Yr
Oct	1,900.1	2,651.0
Nov	-	-
Dec	-	-
Jan	-	-
Feb	-	-
Mar	-	-
Apr	-	-
May	-	-
Jun	-	-
Jul	-	-
Aug	-	-
Sep	-	-
Total	1,900.1	2,651.0

TOTAL WATER USED			WATER USE CHARGED				WATER USE CHARGED			
Acre-feet			Allocation				Allocation			
M & I	Agr	Total	Evap	Used	Total	M & I	Agr	M & I	Agr	Total
1.7	-	1.7	12.1	1.7	13.8	3.8	10.0	-	-	-
2.2	-	2.2	6.4	2.2	8.6	3.2	5.3	-	-	-
1.6	-	1.6	3.5	1.6	5.1	2.2	2.9	-	-	-
0.9	-	0.9	-	-	-	-	-	0.9	-	0.9
-	-	-	-	-	-	-	-	-	-	-
-	-	-	-	-	-	-	-	-	-	-
-	-	-	-	-	-	-	-	-	-	-
-	-	-	-	-	-	-	-	-	-	-
-	-	-	-	-	-	-	-	-	-	-
-	-	-	-	-	-	-	-	-	-	-
-	-	-	-	-	-	-	-	-	-	-
-	-	-	-	-	-	-	-	-	-	-
6.4	-	6.4	22.0	5.5	27.5	9.2	18.3	0.9	-	0.9

Month	CONVERSIONS (M&I AND AG SPLIT)			
	CARRYOVER WATER		CURR YR ALLOCATION	
	M & I	Agr	M & I	Agr
Oct	-	-	-	-
Nov	-	-	-	-
Dec	-	-	-	-
Jan	-	-	-	-
Feb	-	-	-	-
Mar	-	-	-	-
Apr	-	-	-	-
May	-	-	-	-
Jun	-	-	-	-
Jul	-	-	-	-
Aug	-	-	-	-
Sep	-	-	-	-

Month	SCHEDULE AND REVISIONS			SCHEDULE AND REVISIONS		
	Total	Allocation		Allocation		Total
		M & I	Agr	M & I	Agr	
Oct	1,900.1	324.3	1,575.8	935.0	1,716.0	2,651.0
Nov	-	-	-	(116.4)	(47.6)	(164.0)
Dec	-	-	-	-	-	-
Jan	(1,872.6)	(315.1)	(1,557.5)	-	-	-
Feb	-	-	-	0.9	-	0.9
Mar	-	-	-	-	-	-
Apr	-	-	-	-	-	-
May	-	-	-	-	-	-
Jun	-	-	-	-	-	-
Jul	-	-	-	-	-	-
Aug	-	-	-	-	-	-
Sep	-	-	-	-	-	-

Month	BALANCE - CARRYOVER WATER			BALANCE - CURR YR ALLOC			
	County Parks Usage (AF)	Total	Allocation		Allocation		Total
			M & I	Agr	M & I	Agr	
Oct	1.7	1,886.3	320.5	1,565.8	818.6	1,668.4	2,487.0
Nov	2.2	1,877.7	317.3	1,560.5	818.6	1,668.4	2,487.0
Dec	1.6	-	-	-	818.6	1,668.4	2,487.0
Jan	0.9	-	-	-	818.6	1,668.4	2,487.0
Feb	-	-	-	-	-	-	-
Mar	-	-	-	-	-	-	-
Apr	-	-	-	-	-	-	-
May	-	-	-	-	-	-	-
Jun	-	-	-	-	-	-	-
Jul	-	-	-	-	-	-	-
Aug	-	-	-	-	-	-	-
Sep	-	-	-	-	-	-	-

TOTAL CACHUMA PROJECT BALANCE (CARRYOVER + CURRENT YR ALLOCATION) **2,487.0**

Footnotes

**SUMMARY OF WATER USED**  
**CACHUMA PROJECT - CONTRACT #175R-1802**

Contract Year: 10/1/25 to: 9/30/26

Contract Entity: **Santa Barbara Co. Water Agency**  
 Update by COMB 1/31/2026

Month	CARRYOVER WATER		CURRENT YEAR ALLOCATION											
	Carryover Balance Prior Yr	Approved Allocation Curr Yr	TOTAL WATER USED				WATER USE CHARGED				WATER USE CHARGED			
			Acre-feet				Allocation			Allocation				
			Use %	M & I	Agr	Total	Evap	Div	Total	M & I	Agr	M & I	Agr	Total
Oct	27,225.0	25,714.0	0.0	1,775.6	408.2	2,183.8	166.0	2,183.8	2,349.8	1,907.8	442.0	-	-	-
Nov	-	-	0.0	1,341.9	221.0	1,562.9	82.3	1,562.9	1,645.2	1,407.3	237.9	-	-	-
Dec	-	-	0.0	1,094.7	117.8	1,212.5	42.6	1,212.5	1,255.1	1,128.3	126.7	-	-	-
Jan	-	-	0.0	1,097.3	112.5	1,209.7	-	-	-	-	-	1,097.3	112.5	1,209.7
Feb	-	-	-	-	-	-	-	-	-	-	-	-	-	-
Mar	-	-	-	-	-	-	-	-	-	-	-	-	-	-
Apr	-	-	-	-	-	-	-	-	-	-	-	-	-	-
May	-	-	-	-	-	-	-	-	-	-	-	-	-	-
Jun	-	-	-	-	-	-	-	-	-	-	-	-	-	-
Jul	-	-	-	-	-	-	-	-	-	-	-	-	-	-
Aug	-	-	-	-	-	-	-	-	-	-	-	-	-	-
Sep	-	-	-	-	-	-	-	-	-	-	-	-	-	-
Total	27,225.0	25,714.0	0.1	5,309.4	859.5	6,168.9	290.9	4,959.2	5,250.1	4,443.4	806.6	1,097.3	112.5	1,209.7

Month	CONVERSIONS (M&I AND AG SPLIT)			
	CARRYOVER WATER		CURR YR ALLOCATION	
	M & I	Ag	M & I	Ag
Oct	-	-	-	-
Nov	-	-	-	-
Dec	-	-	-	-
Jan	-	-	-	-
Feb	-	-	-	-
Mar	-	-	-	-
Apr	-	-	-	-
May	-	-	-	-
Jun	-	-	-	-
Jul	-	-	-	-
Aug	-	-	-	-
Sep	-	-	-	-

Month	SCHEDULE AND REVISIONS			SCHEDULE AND REVISIONS		
	Total	Allocation		Allocation		Total
		M & I	Ag	M & I	Ag	
Begin Bal	27,225.0	21,635.7	5,589.3	19,506.5	6,207.5	25,714.0
Oct	-	-	-	11.3	(11.3)	-
Nov	-	-	-	-	-	-
Dec	-	-	-	-	-	-
Carryover Spill (-21,975.0AF)	(21,975.0)	(17,255.4)	(4,719.6)	-	-	-
Surplus (1,209.7AF)	-	-	-	1,097.3	112.5	1,209.7
Jan	-	-	-	-	-	-
Feb	-	-	-	-	-	-
Mar	-	-	-	-	-	-
Apr	-	-	-	-	-	-
May	-	-	-	-	-	-
Jun	-	-	-	-	-	-
Jul	-	-	-	-	-	-
Aug	-	-	-	-	-	-
Sep	-	-	-	-	-	-

Month	BALANCE - CARRYOVER WATER			BALANCE - CURR YR ALLOC			
	County Parks Usage (AF)	Allocation		Allocation		Total	
		M & I	Ag	M & I	Ag		
Oct	1.7	24,875.2	19,727.9	5,147.3	19,517.8	6,196.2	25,714.0
Nov	2.2	23,230.0	18,320.6	4,909.4	19,517.8	6,196.2	25,714.0
Dec	1.6	-	-	-	19,517.8	6,196.2	25,714.0
Jan	0.9	-	-	-	19,517.8	6,196.2	25,714.0
Feb	-	-	-	-	-	-	-
Mar	-	-	-	-	-	-	-
Apr	-	-	-	-	-	-	-
May	-	-	-	-	-	-	-
Jun	-	-	-	-	-	-	-
Jul	-	-	-	-	-	-	-
Aug	-	-	-	-	-	-	-
Sep	-	-	-	-	-	-	-

TOTAL CACHUMA PROJECT BALANCE (CARRYOVER + CURRENT YR ALLOCATION) **25,714.0**

Footnotes



February 2026

Day <sup>1</sup>	Lake Cachuma				Rainfall		Evaporation <sup>3</sup>		CCWA Inflow	Release					Computed Inflow <sup>5</sup>	
	Elevation	Storage <sup>2</sup>	Change in Storage	Surface Area						Park Use	Tunnel	Hilton Creek	WR 89-18	Outlet <sup>4</sup>		Spillway
SHEF Tag→	HL	LS	LC		PP	PPAF	EV	EVAF	QICCWA		QUTEC	QUHIL	QUWATR	QU	QS	QI
	ft	acre-feet	acre-feet	acres	inches	acre-feet	inches	acre-feet	acre-feet	acre-feet	acre-feet	acre-feet	acre-feet	acre-feet	acre-feet	acre-feet
31	753.87	195,711														
1	753.84	195,617	(94.2)	3,152.7	-	-	0.110	22.25	-	-	64.95	14.46	-	360.00	-	367.42
2	753.82	195,554	(62.8)	3,152.1	-	-	0.090	18.20	-	-	77.22	14.50	-	361.00	-	408.09
3	753.81	195,523	(31.4)	3,151.7	-	-	0.120	24.27	-	-	72.28	14.51	-	324.00	-	403.65
4	753.79	195,460	(62.8)	3,151.1	-	-	0.120	24.26	-	-	72.28	14.48	-	319.00	-	367.19
5	753.76	195,366	(94.2)	3,150.1	-	-	0.140	28.30	-	-	73.00	14.49	-	319.00	-	340.54
6	753.73	195,272	(94.2)	3,149.1	-	-	0.130	26.27	-	-	63.75	14.47	-	282.00	-	292.25
7	753.71	195,209	(62.8)	3,148.4	-	-	0.080	16.16	-	-	62.17	14.48	-	280.00	-	309.98
8	753.69	195,146	(62.8)	3,147.8	-	-	0.140	28.28	-	-	61.07	14.47	-	280.00	-	320.98
9	753.67	195,083	(62.8)	3,147.1	-	-	0.070	14.14	-	-	60.69	14.47	-	280.00	-	306.46
10	753.65	195,020	(62.8)	3,146.5	-	-	0.100	20.19	-	-	50.47	14.49	-	281.00	-	303.32
11	753.83	195,586	565.5	3,152.4	1.96	514.9	-	-	-	-	46.06	14.49	-	240.00	-	351.14
12	753.96	195,994	408.4	3,156.7	-	-	0.090	18.23	-	-	33.70	14.52	-	239.00	-	713.85
13	754.01	196,152	157.4	3,158.3	0.01	2.6	0.100	20.27	-	-	29.81	14.49	-	238.00	-	457.32
14	753.81	195,523	(628.6)	3,151.7	-	-	0.100	20.22	-	-	33.02	14.51	-	420.00	-	(140.86)
15	753.94	195,931	408.4	3,156.0	-	-	0.080	16.20	-	-	30.82	14.59	-	462.00	-	932.01
16	753.28	193,858	(2,073.4)	3,134.3	0.37	96.6	0.090	18.10	-	-	29.43	14.47	-	460.00	2,530.00	881.93
17	752.80	192,357	(1,501.3)	3,118.4	1.51	392.4	0.140	28.01	-	-	22.81	14.43	-	459.00	2,966.00	1,596.54
18	752.76	192,232	(124.3)	3,117.1	0.98	254.6	-	-	-	-	17.93	14.43	-	457.00	2,390.00	2,500.46
19	753.19	193,575	1,342.9	3,131.4	0.09	23.5	0.090	18.08	-	-	16.68	14.45	-	461.00	1,616.00	3,445.64
<b>Total</b>			<b>(2,136.26)</b>		<b>4.92</b>	<b>1,284.62</b>	<b>1.790</b>	<b>361.44</b>	<b>-</b>	<b>-</b>	<b>918.15</b>	<b>275.20</b>	<b>-</b>	<b>6,522.00</b>	<b>9,502.00</b>	<b>14,157.92</b>
<b>Minimum</b>	752.76	192,232	<b>(2,073.43)</b>	3,117.10	-	-	-	-	-	-	16.68	14.43	-	238.00	-	<b>(140.86)</b>
<b>Average</b>	753.63	194,972	<b>(112.43)</b>	3,145.94	0.26	67.61	0.094	19.02	-	-	48.32	14.48	-	343.26	500.11	745.15
<b>Maximum</b>	754.01	196,152	1,342.91	3,158.26	1.96	514.89	0.140	28.30	-	-	77.22	14.59	-	462.00	2,966.00	3,445.64

Comments

1. Data based on 24-hour period ending 0800
2. Storage volume based on 2021 bathymetric survey.
3. Evaporation in inches is the measured pan evaporation. Calculated evaporation in acre feet uses the February pan factor: 77%
4. Indicated outlet release includes any leakage around gates.
5. Computed inflow is the sum of change in storage, releases, and evaporation minus precip on the reservoir surface and CCWA inflow.



**Santa Barbara County Parks Division,  
Cachuma Lake Recreation Area  
Summary of Aquatic Invasive Species Vessel Inspection Program  
and Early Detection Monitoring Program: January 2026**



<b>Cachuma Lake Recreation Area Launch Data – January 2026</b>		
<b>Inspection Data</b>		
Total Vessels Entering Park	464	
Total Vessels Launched	448	
Total Vessels Quarantined	16	
Returning (Tagged) Boats Launched	399	89%
Kayak/Canoe: Inspected, launched	49	11%
4-stroke Engines	*	
2-strokes, w/CARB star ratings	*	
2-strokes, NO emissions ratings	*	
<b>Quarantine Data</b>		
Total Vessels Quarantined	16	
Quarantined 14 days	*	
Quarantined 30 days	16	
<b>Quarantine Cause</b>		
Water on vessel*	*	
Debris on hull*	*	
Plug installed*	*	
From infected county	2	
Ballast tanks*	*	
Boat longer than 24 feet*	*	
Out-of-state	0	
Unspecified*	*	
Mandatory Quarantine All Untagged Boats	16	
<b>Demographic Data</b>		
Quarantined from infected county	2	
Quarantined from SB County	11	
Quarantined from uninfected co	3	

Boat Launch Tags: Boats with Cachuma Lake Boat Launch Tags attach boat to trailer.

No mussel species have been located on any vessel entering Cachuma Lake as of the last day of this month.

\* These conditions are no longer being tracked.

**EARLY DETECTION MONITORING PROGRAM SUMMARY**

Summary: No Dreissenid Mussels were detected, nor Aquatic Invasive Species of any kind.

Inspection Site: Cachuma Lake Reservoir, Santa Barbara County, California.

Plankton Tow Inspection Dates: 2026.01.23

Artificial Substrate & Surface Survey Date: 2026.01.23, 2026.01.31

Method: 4 Artificial Substrate Stations; 20 meters /65.61 linear feet of line as well as ramp, dock, anchor, etc.

Surveyors: COSB, Parks Division –Camarillo, LaRose, Friedli

Lake elevation: Max feet: 753.00, current 753.86; Max acre-feet: 192,978, current: 195,680

Capacity: 101% At of the end of the survey month.